

# Level C

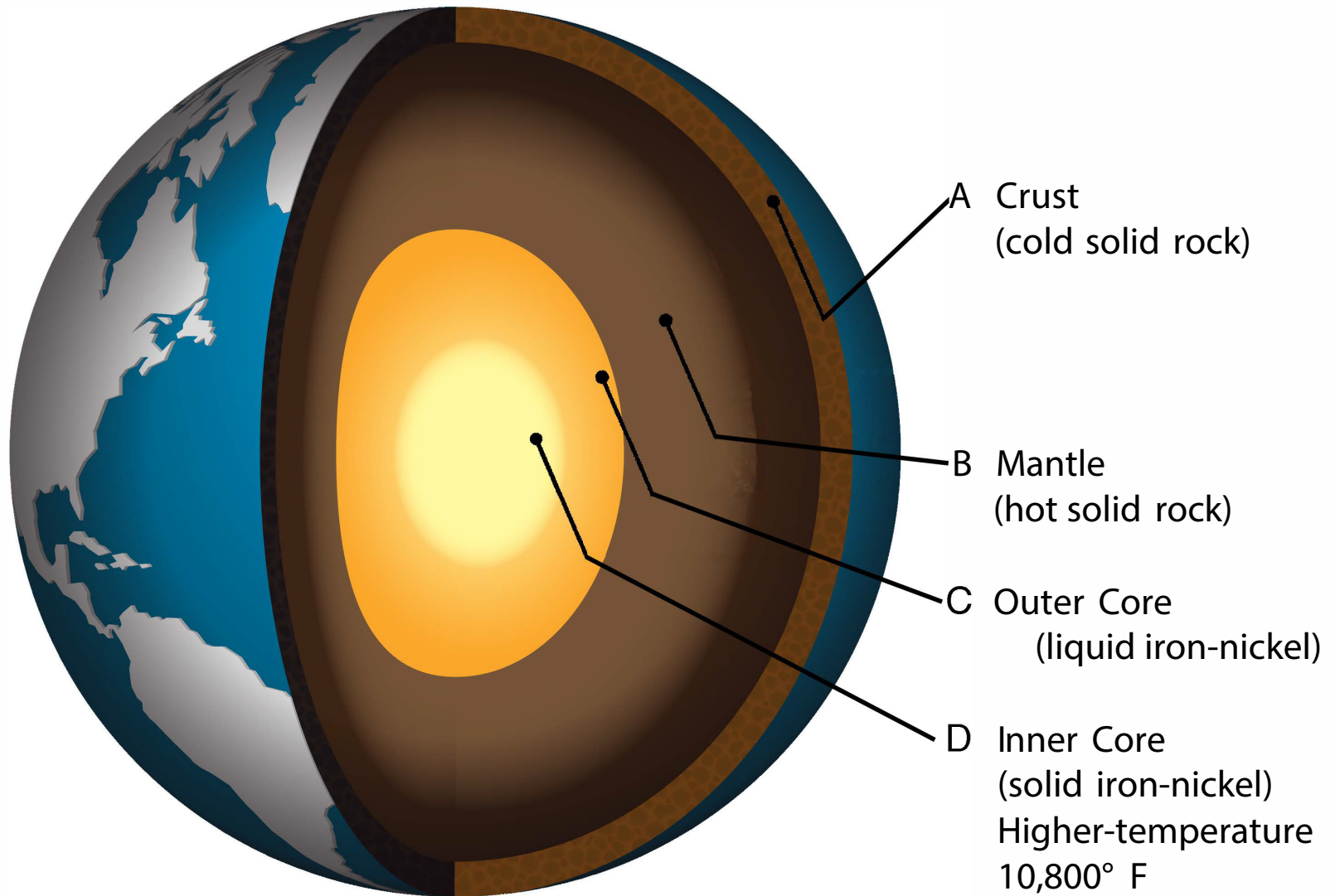
## Displays



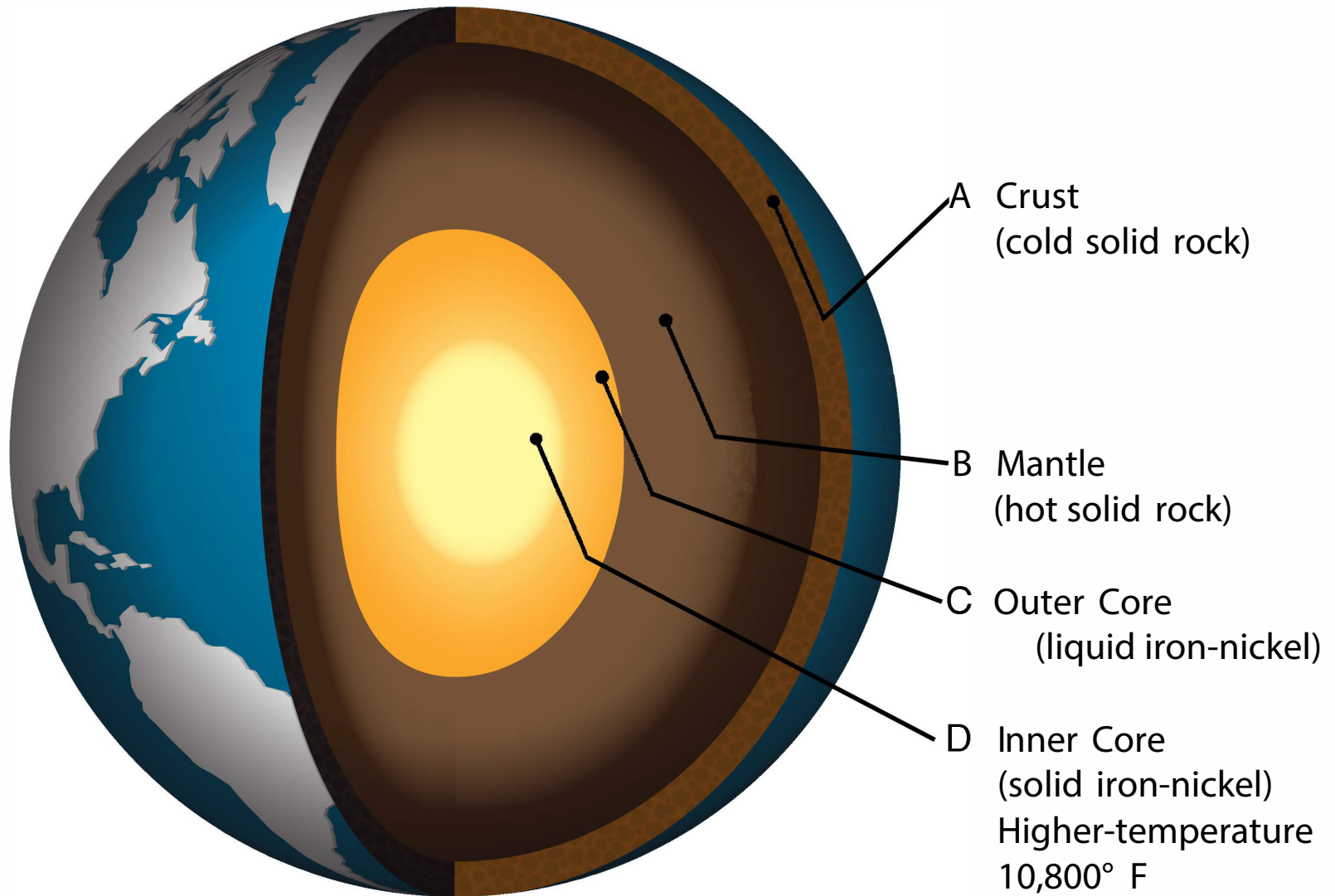
# Unit Displays



# Earth in Cross Section Chart



# Earth in Cross Section Chart



# Rocks Chart

## Igneous



ORIGINAL ROCKS

## Sedimentary



SMALL PIECES OF ROCK  
CEMENTED TOGETHER

## Metamorphic



CHANGED BY HEAT  
AND PRESSURE

Basalt

Sand → Sandstone →

Quartzite

Granite

Shells → Limestone →

Marble

Mud → Shale →

Slate

# Rocks Chart

## Igneous



ORIGINAL ROCKS

## Sedimentary



SMALL PIECES OF ROCK  
CEMENTED TOGETHER

## Metamorphic



CHANGED BY HEAT  
AND PRESSURE

Basalt

Sand → Sandstone →

Quartzite

Granite

Shells → Limestone →

Marble

Mud → Shale →

Slate

# Rocks Chart

## Igneous



ORIGINAL ROCKS

## Sedimentary



SMALL PIECES OF ROCK  
CEMENTED TOGETHER

## Metamorphic



CHANGED BY HEAT  
AND PRESSURE

Basalt

Sand → Sandstone →

Quartzite

Granite

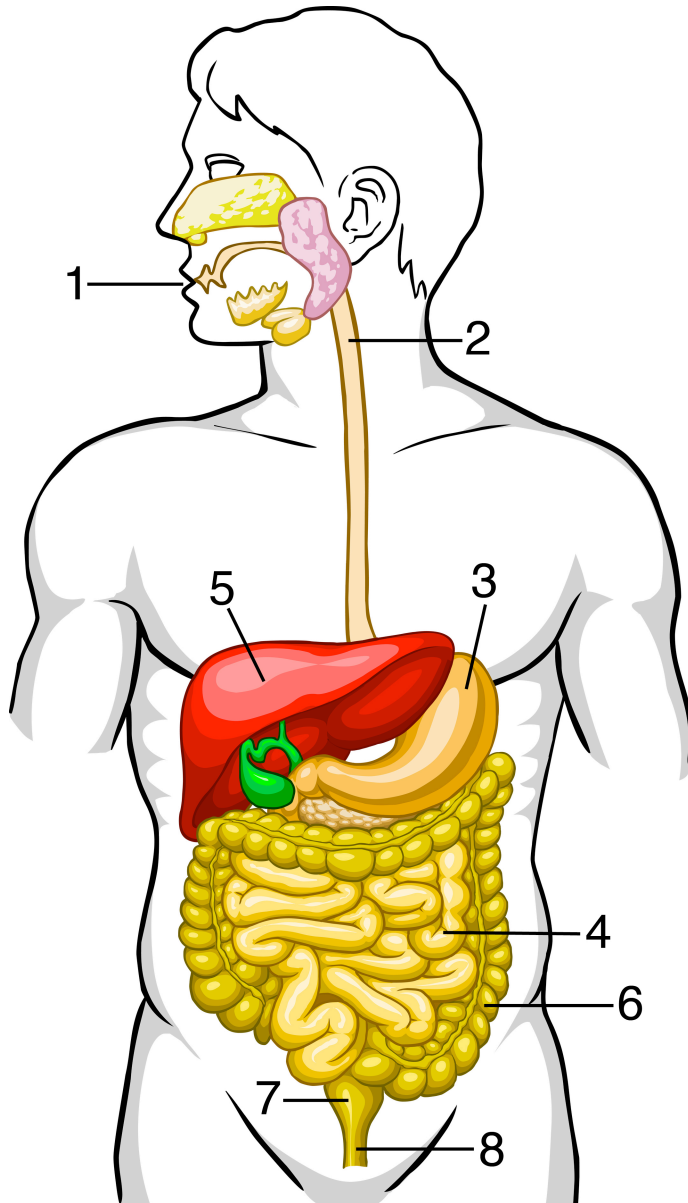
Shells → Limestone →

Marble

Mud → Shale →

Slate

# Solid Waste Chart A



acid

anus

esophagus

large intestine

liver

mouth

rectum

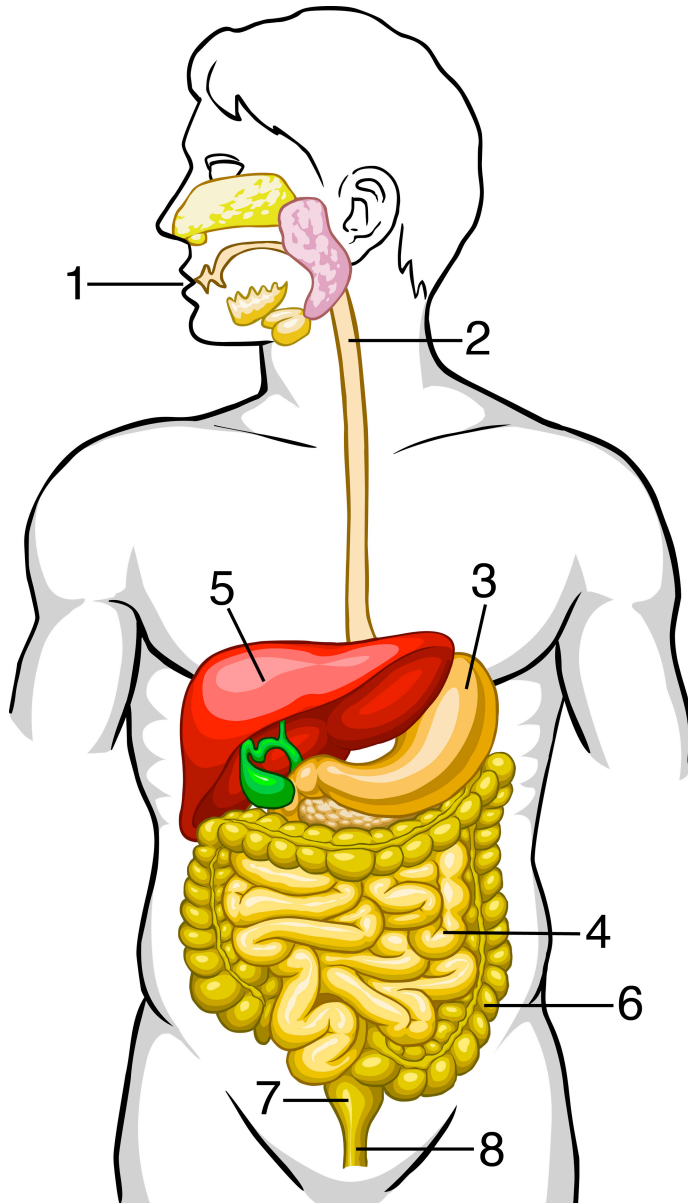
saliva

small intestine

stomach

teeth

# Solid Waste Chart A



acid

anus

esophagus

large intestine

liver

mouth

rectum

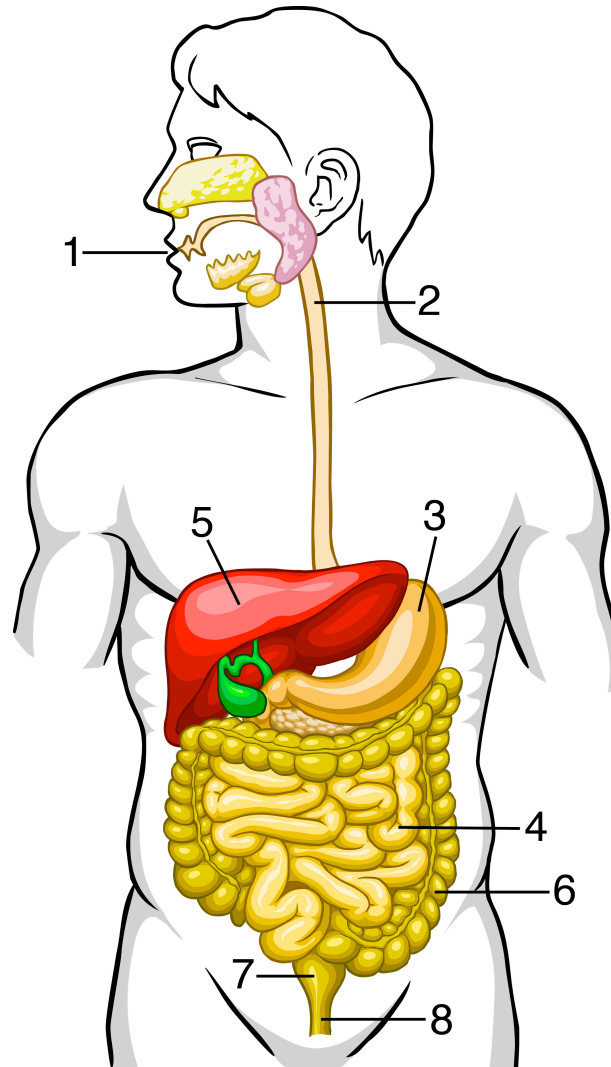
saliva

small intestine

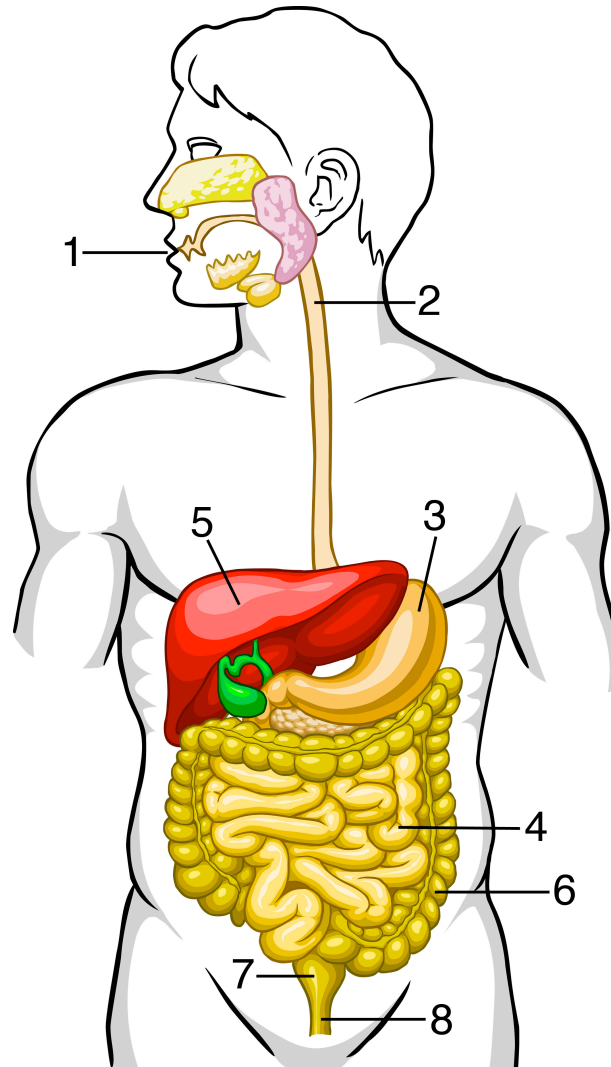
stomach

teeth

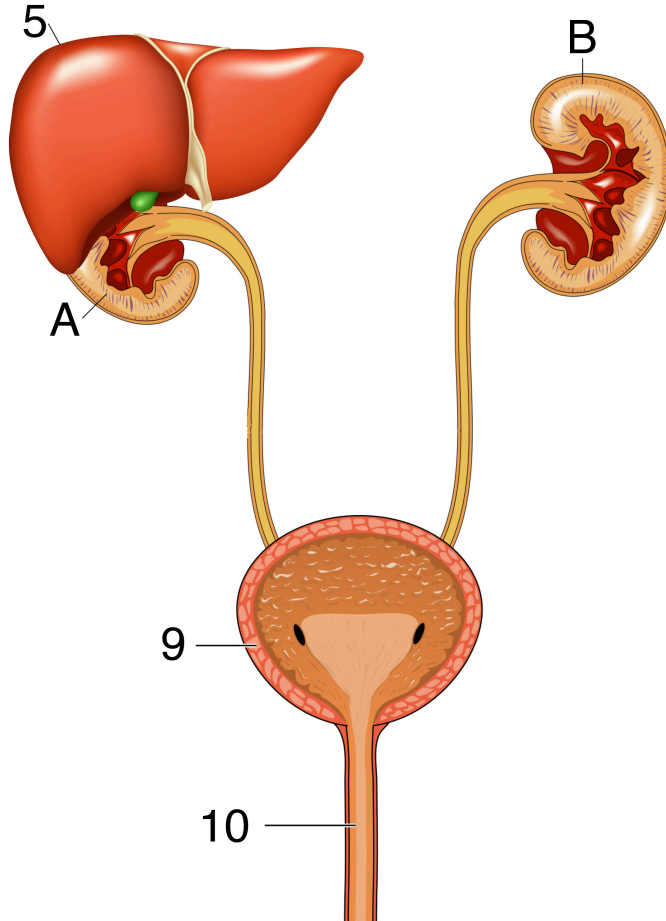
# Solid Waste Chart B



# Solid Waste Chart B

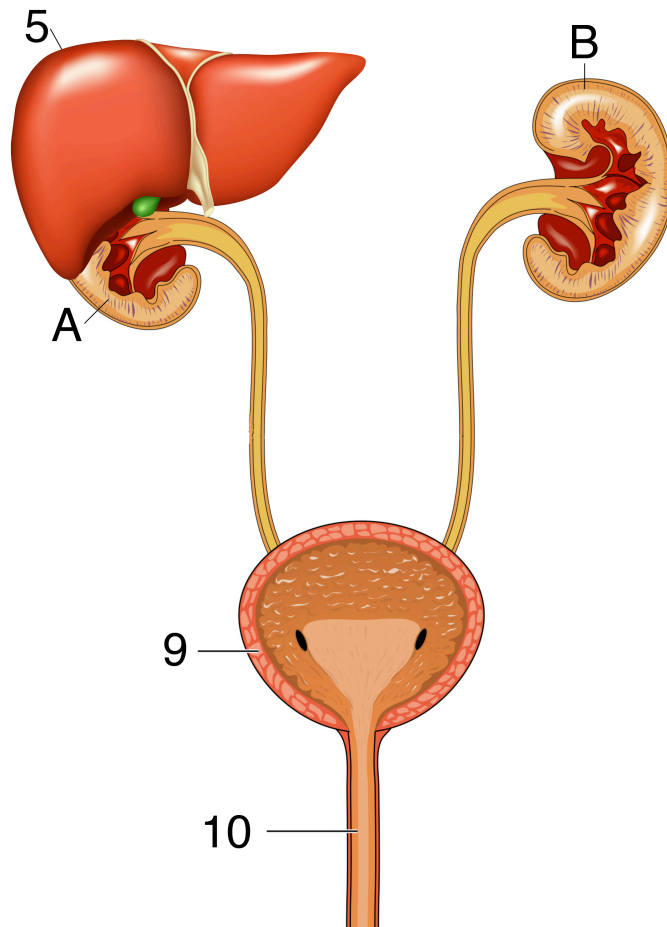


# Liquid Waste Chart A

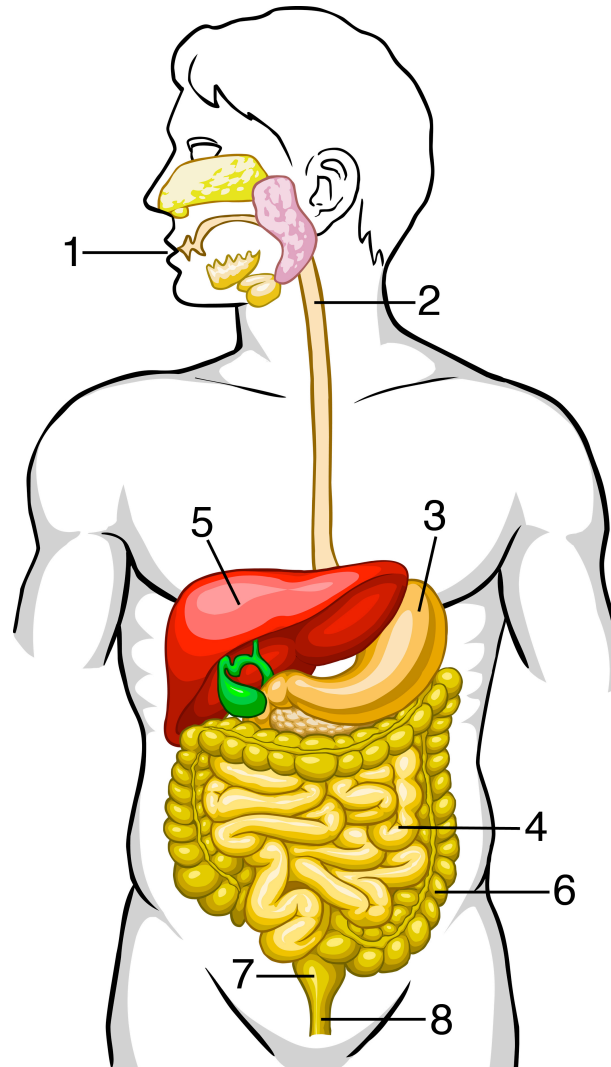


- bladder
- breathing out
- kidneys
- liver
- sweating
- urea
- urethra
- urine

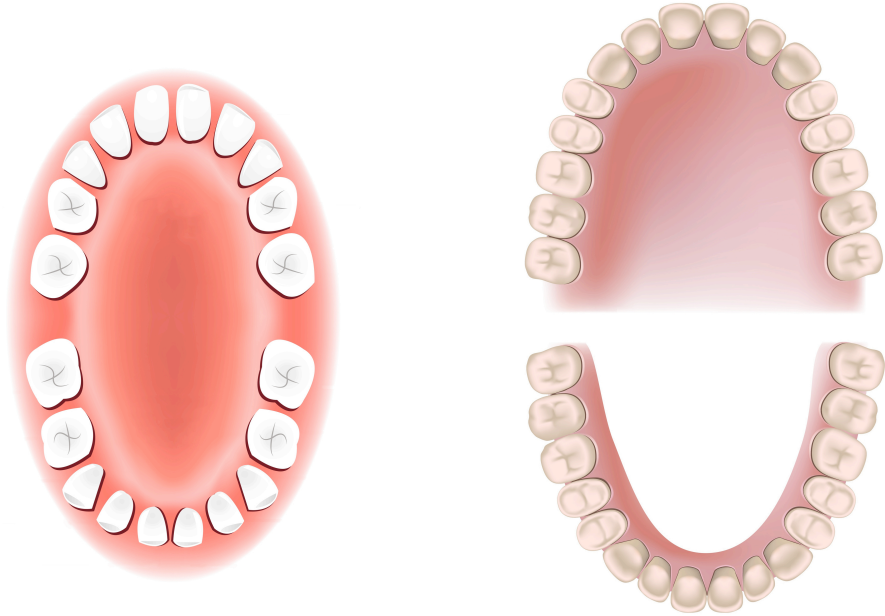
# Liquid Waste Chart B



# Solid Waste Chart B

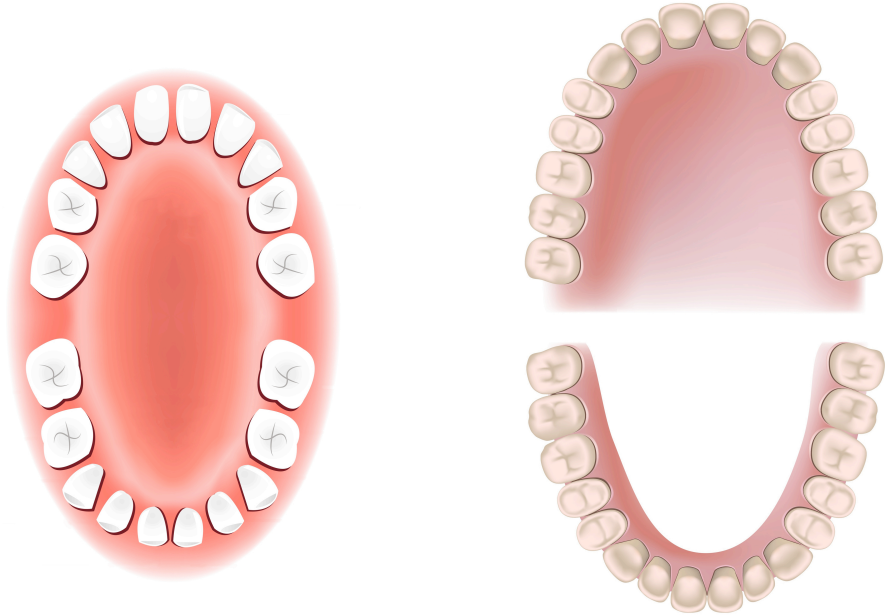


# Human Teeth Chart



bicuspid  
canines  
incisors  
molars

# Human Teeth Chart



bicuspid

canine

incisor

molar

# Animal Teeth Chart



herbivorous



carnivorous

inches

feet

yard

72

6

2

$$A = 100$$

$$B = 1$$

$$C = 39$$

$$A = 2$$

$$B = 4,000$$

$$C = 120$$

$$A = 4$$

$$B = 2$$

$$C = 16$$

$$A = 36$$

$$B = 3$$

$$C = 1$$

$$A = 26$$

$$B = 4$$

$$C = 12$$

bricks = 2

cans of beans = 3

bars of gold = 5

shoelace = 24

pencil = 96

board = 30

shoelace = 14

pencil = 28

board = 45

## You

shoelace = 24

pencil = 96

board = 30

## Other Person

shoelace = 14

pencil = 28

board = 45

# Fahrenheit

pen = 25

stick = 10

string = 12

# Celsius

$$\begin{array}{r} 77 \\ - 32 \\ \hline \end{array}$$

$$\begin{array}{r} 77 \\ - 32 \\ \hline 45 \end{array}$$

$$\begin{array}{r} 77 \\ - 32 \\ \hline 45 \end{array}$$

$$\frac{45}{1} \times \frac{5}{9}$$

$$\begin{array}{r} 77 \\ - 32 \\ \hline 45 \end{array}$$

$$\frac{45}{1} \times \frac{5}{9} = \frac{225}{25} \div 9 =$$

$$\begin{array}{r} 50 \\ - 32 \\ \hline \end{array}$$

$$\begin{array}{r} 50 \\ - 32 \\ \hline 18 \end{array}$$

$$\begin{array}{r} 50 \\ - 32 \\ \hline 18 \end{array}$$

$$\frac{18}{1} \times \frac{5}{9}$$

$$\begin{array}{r} 50 \\ - 32 \\ \hline 18 \end{array}$$

$$\frac{18}{1} \times \frac{5}{9} = 90 \div 9 = 10$$

$$\begin{array}{r} 41 \\ - 32 \\ \hline 9 \end{array}$$

$$\frac{9}{1} \times \frac{5}{9} = 41 \div 9 = 5$$

$$\begin{array}{r} 68 \\ - 32 \\ \hline 36 \end{array}$$

$$\frac{36}{1} \times \frac{5}{9} = 180 \div 9 = 20$$

40° C

40° F

$$\begin{array}{r} 104 \\ - 32 \\ \hline 72 \end{array}$$

$$\frac{72}{1} \times \frac{5}{9} = 360 \div 9 = 40^{\circ} \text{ C}$$

$$\begin{array}{r} 59 \\ - 32 \\ \hline 27 \end{array}$$

$$\frac{27}{1} \times \frac{5}{9} = 135 \div 9 = 15^{\circ} \text{ C}$$

$$\begin{array}{r} 86 \\ - 32 \\ \hline 54 \end{array}$$

$$\frac{54}{1} \times \frac{5}{9} = 270 \div 9 = 30^{\circ} \text{ C}$$

42° F

42° C

$$\begin{array}{r} 68 \\ - 32 \\ \hline 36 \end{array}$$

$$\frac{36}{1} \times \frac{5}{9} = 180 \div 9 = 20^{\circ} \text{ C}$$

$$\begin{array}{r} 41 \\ - 32 \\ \hline 9 \end{array}$$

$$\frac{9}{1} \times \frac{5}{9} = 45 \div 9 = 5^{\circ} \text{ C}$$

$$\begin{array}{r} 113 \\ - 32 \\ \hline 81 \end{array}$$

$$\frac{81}{1} \times \frac{5}{9} = 405 \div 9 = 45^{\circ} \text{ C}$$

$$\begin{array}{r} 59 \\ - 32 \\ \hline 27 \end{array}$$

$$\frac{27}{1} \times \frac{5}{9} = 135 \div 9 = 15^{\circ} \text{ C}$$

$$\begin{array}{r} 137 \\ - 32 \\ \hline 135 \end{array}$$

$$\frac{135}{1} \times \frac{5}{9} = 675 \div 9 = 75^{\circ} \text{ C}$$

$$\frac{60}{1} \times \frac{9}{5} = 540 \div 5 = 108$$

$$\begin{array}{r} 108 \\ + 32 \\ \hline 140^\circ \\ \text{F} \end{array}$$

$$\frac{35}{1} \times \frac{9}{5} = 315 \div 5 = 63$$

$$\begin{array}{r} 63 \\ + 32 \\ \hline 95^{\circ} \\ \text{F} \end{array}$$

$$\frac{90}{1} \times \frac{9}{5} = 810 \div 5 = 162$$

$$\begin{array}{r} 162 \\ + 32 \\ \hline 194^{\circ} \\ \text{F} \end{array}$$

$$\frac{95}{1} \times \frac{9}{5} = 855 \div 5 = 171$$

$$\begin{array}{r} 171 \\ + 32 \\ \hline 203^\circ \\ \text{F} \end{array}$$

$$\frac{75}{1} \times \frac{9}{5} = 675 \div 5 = 135$$

$$\begin{array}{r} 135 \\ + 32 \\ \hline 167^\circ \\ \text{F} \end{array}$$

$$\frac{40}{1} \times \frac{9}{5} = 360 \div 5 = 72$$

$$\begin{array}{r} 72 \\ + 32 \\ \hline 104^{\circ} \\ \text{F} \end{array}$$

$$\begin{array}{r} 131 \\ - 32 \\ \hline 99 \end{array}$$

$$\frac{99}{1} \times \frac{5}{9} = 495 \div 9 = 55^{\circ} \text{ C}$$

$$\begin{array}{r} 86 \\ - 32 \\ \hline 54 \end{array}$$

$$\frac{54}{1} \times \frac{5}{9} = 270 \div 9 = 30^{\circ} \text{ C}$$

$$\frac{20}{1} \times \frac{9}{5} = 180 \div 5 = 36$$

$$\begin{array}{r} 36 \\ + 32 \\ \hline 68^\circ \\ \text{F} \end{array}$$

$$\frac{70}{1} \times \frac{9}{5} = 630 \div 5 = 126$$

$$\begin{array}{r} 126 \\ + 32 \\ \hline 158^\circ \\ \text{F} \end{array}$$

$$\begin{array}{r} 149 \\ - 32 \\ \hline 117 \end{array} \quad \frac{117}{1} \times \frac{5}{9} = 585 \div 9 = 65^{\circ} \text{ C}$$

$$\begin{array}{r} 77 \\ - 32 \\ \hline 45 \end{array}$$

$$\frac{45}{1} \times \frac{5}{9} = 225 \div 9 = 25^{\circ} \text{ C}$$

$$\frac{15}{1} \times \frac{9}{5} = 135 \div 5 = 27$$

$$\begin{array}{r} 27 \\ + 32 \\ \hline 59^\circ \\ \text{F} \end{array}$$

$$\frac{30}{1} \times \frac{9}{5} = 270 \div 5 = 54$$

$$\begin{array}{r} 54 \\ + 32 \\ \hline 86^\circ \\ \text{F} \end{array}$$

$$\begin{array}{r} 194 \\ - 32 \\ \hline 162 \end{array} \quad \frac{162}{1} \times \frac{5}{9} = 810 \div 9 = 90^{\circ} \text{ C}$$

$$\begin{array}{r} 167 \\ - 32 \\ \hline 135 \end{array} \quad \frac{135}{1} \times \frac{5}{9} = 675 \div 9 = 75^{\circ} \text{ C}$$

$$\frac{60}{1} \times \frac{9}{5} = 540 \div 5 = 108$$

$$\begin{array}{r} 108 \\ + 32 \\ \hline 140^\circ \\ \text{F} \end{array}$$

$$\frac{115}{1} \times \frac{9}{5} = 1035 \div 5 =$$

207

$$\begin{array}{r} 207 \\ + 32 \\ \hline 239^\circ \\ \text{F} \end{array}$$

$$\frac{95}{1} \times \frac{9}{5} = \frac{855}{5}$$

$$\begin{array}{r} 855 \div 5 = \\ 171 \quad + 32 \\ \hline 203^\circ \\ \text{F} \end{array}$$

$$\begin{array}{r} 221 \\ - 32 \\ \hline 189 \end{array}$$

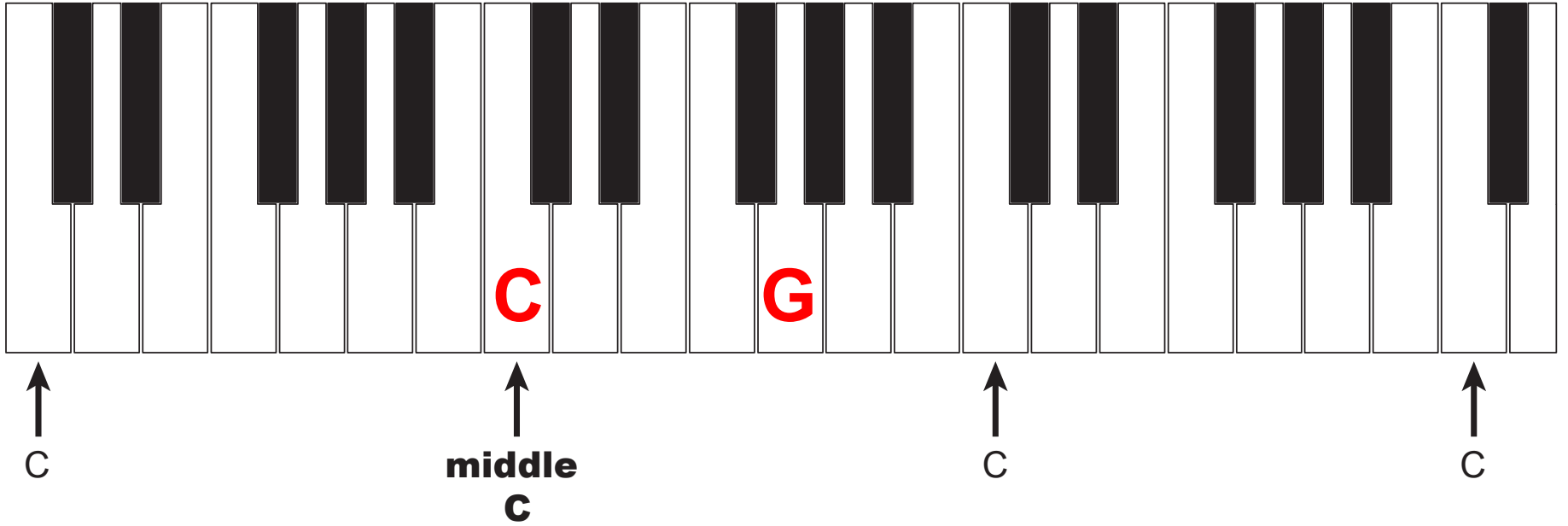
$$\frac{189}{1} \times \frac{5}{9} = 945 \div 9 = 105^{\circ} \text{ C}$$

$$\frac{5}{1} \times \frac{9}{5} = \frac{45}{5}$$

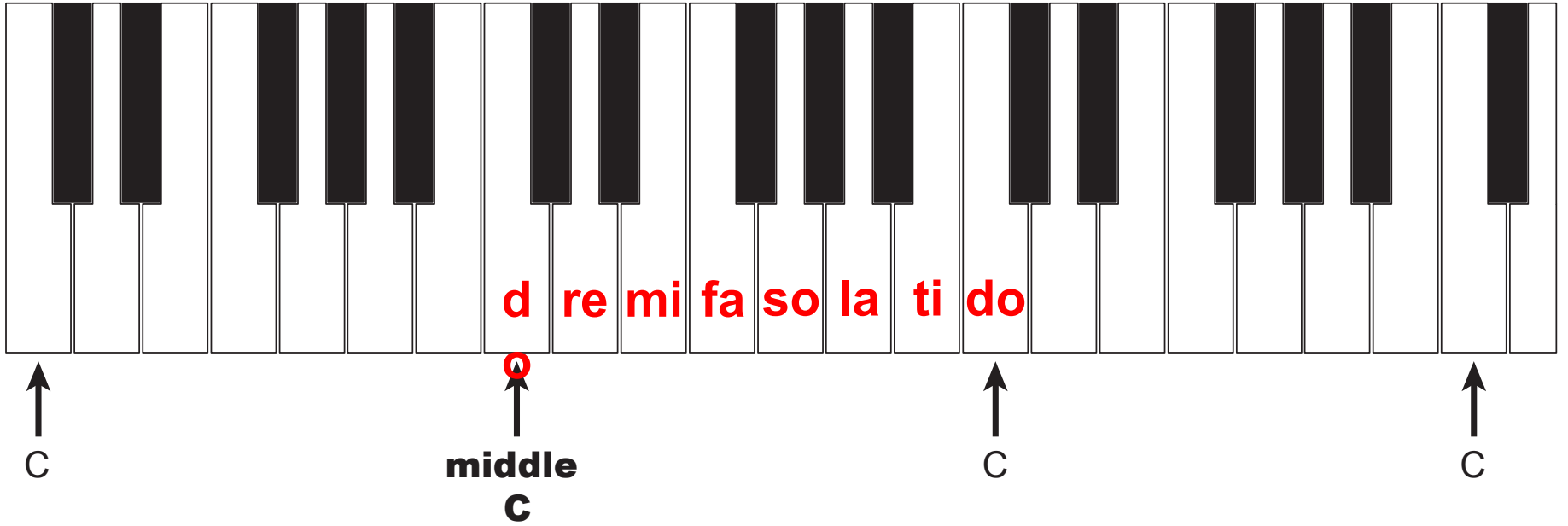
$$\begin{array}{r} 45 \div 5 = 9 \\ + 32 \\ \hline 41^\circ \end{array} \quad \mathbf{F}$$

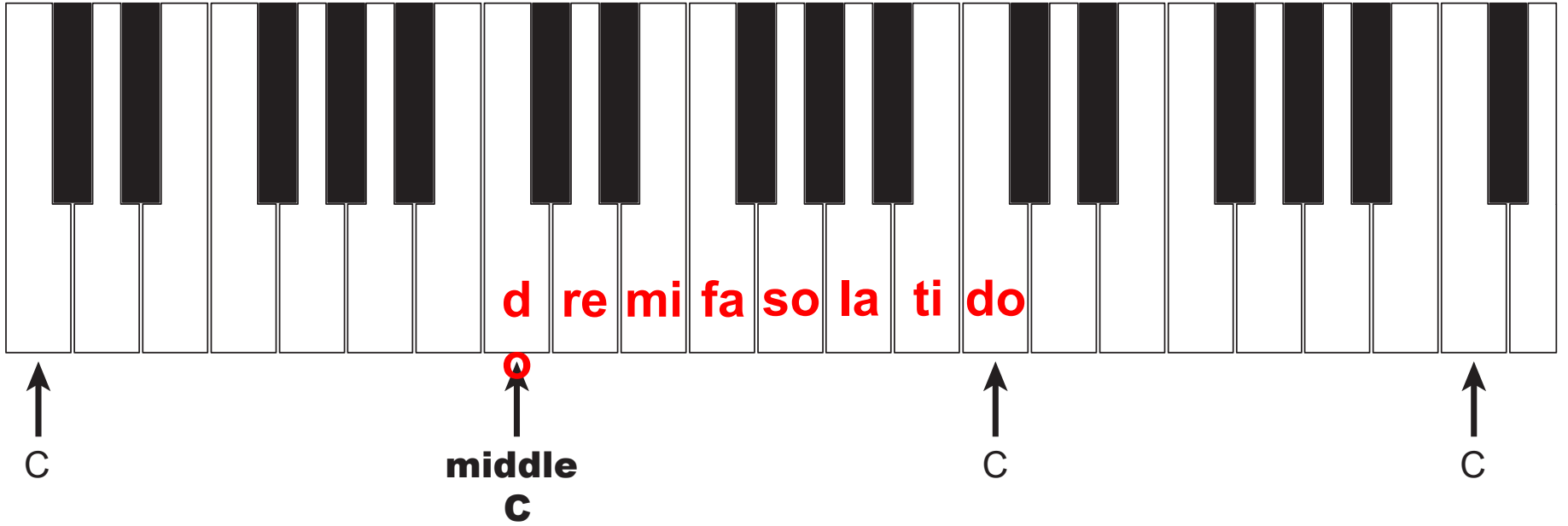
$$\begin{array}{r} 68 \\ - 32 \\ \hline 36 \end{array}$$

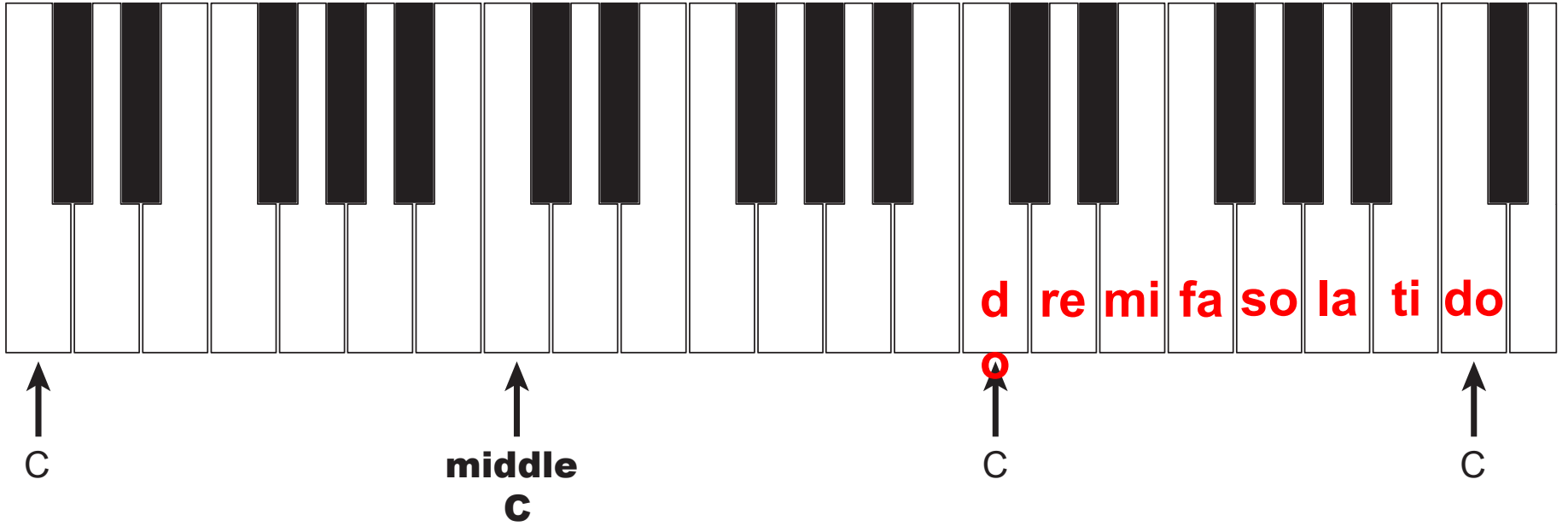
$$\frac{36}{1} \times \frac{5}{9} = 180 \div 9 = 20^{\circ} \text{ C}$$



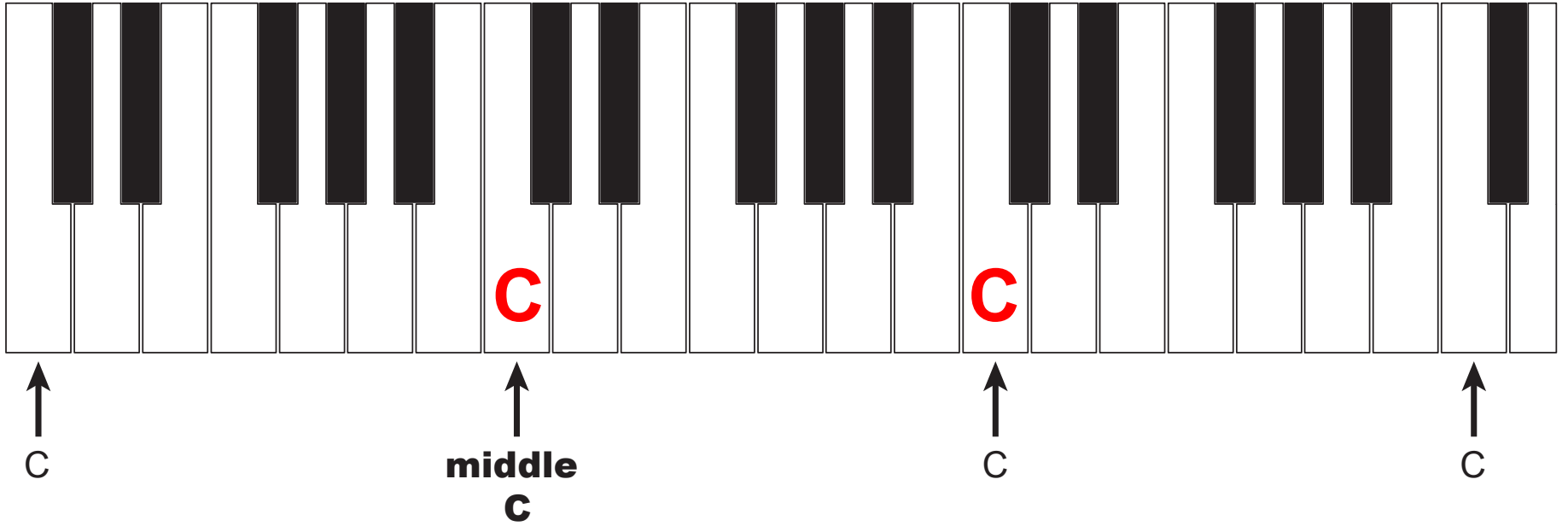


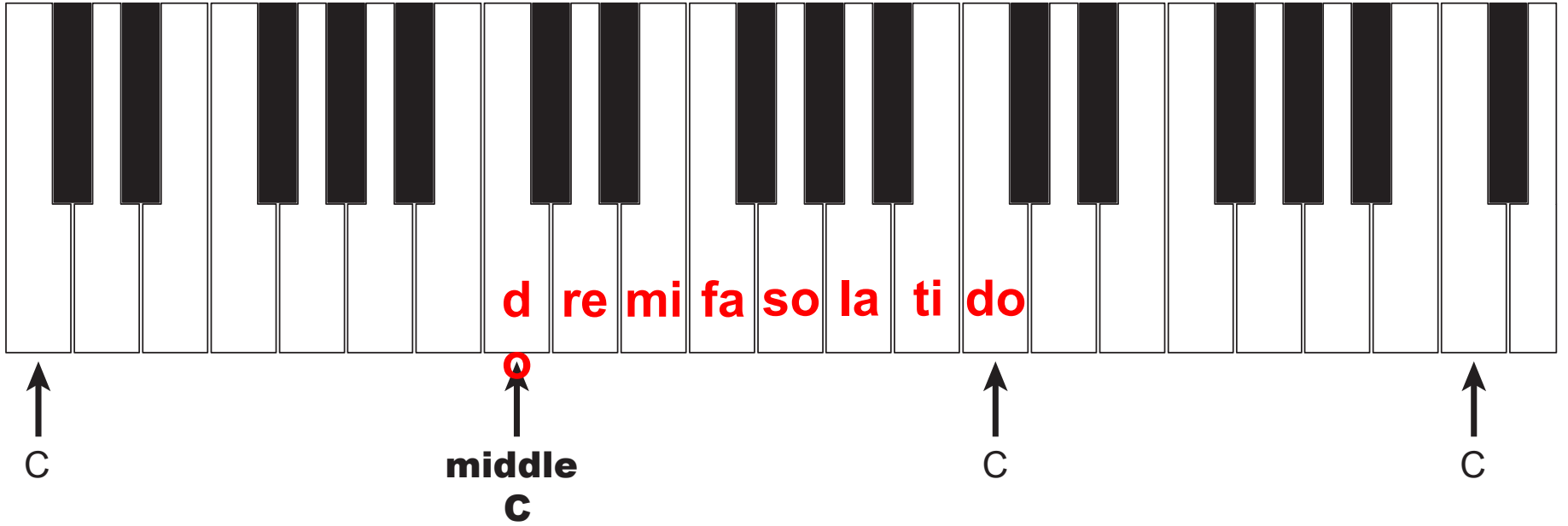




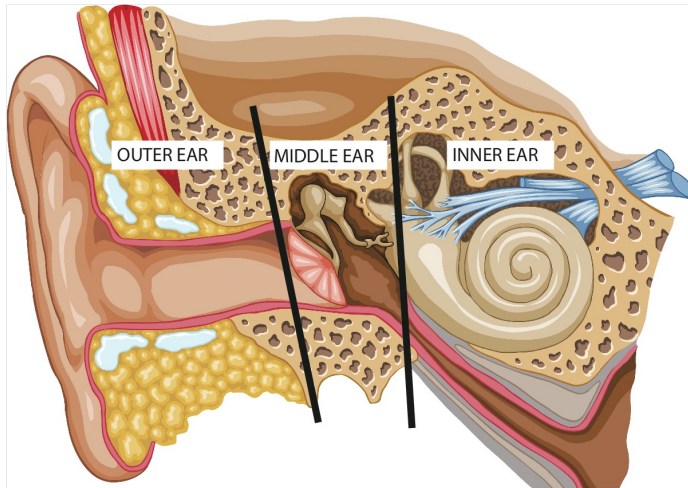


octav  
e

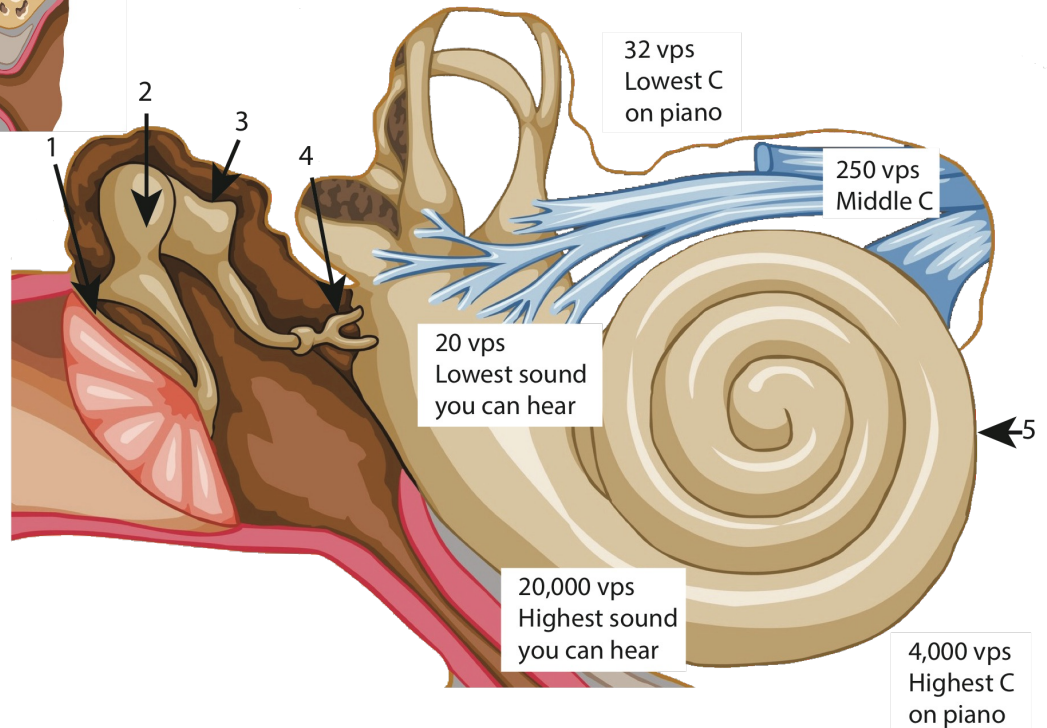




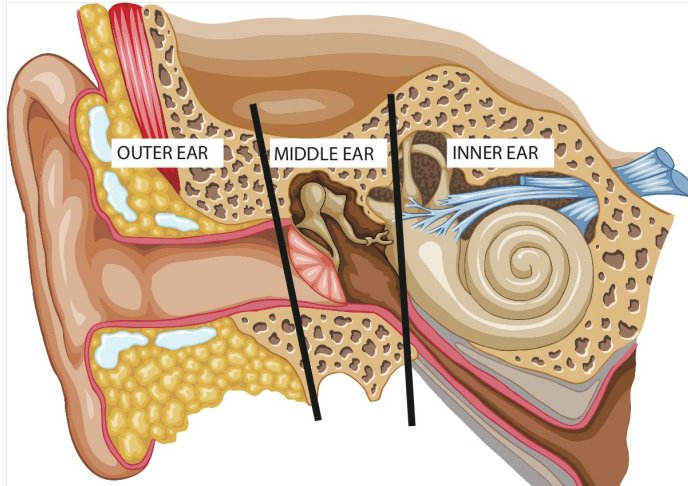
# Hearing and Sound Chart



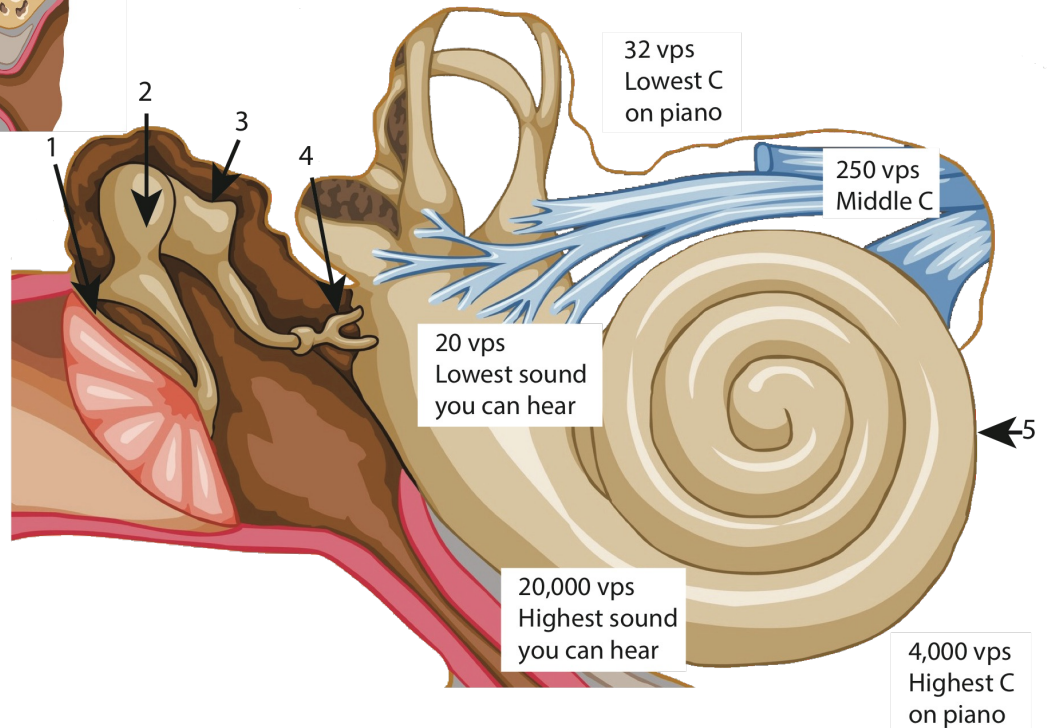
anvil  
 cochlea  
 eardrum  
 hammer  
 stirrup



# Hearing and Sound Chart



anvil  
cochlea  
eardrum  
hammer  
stirrup





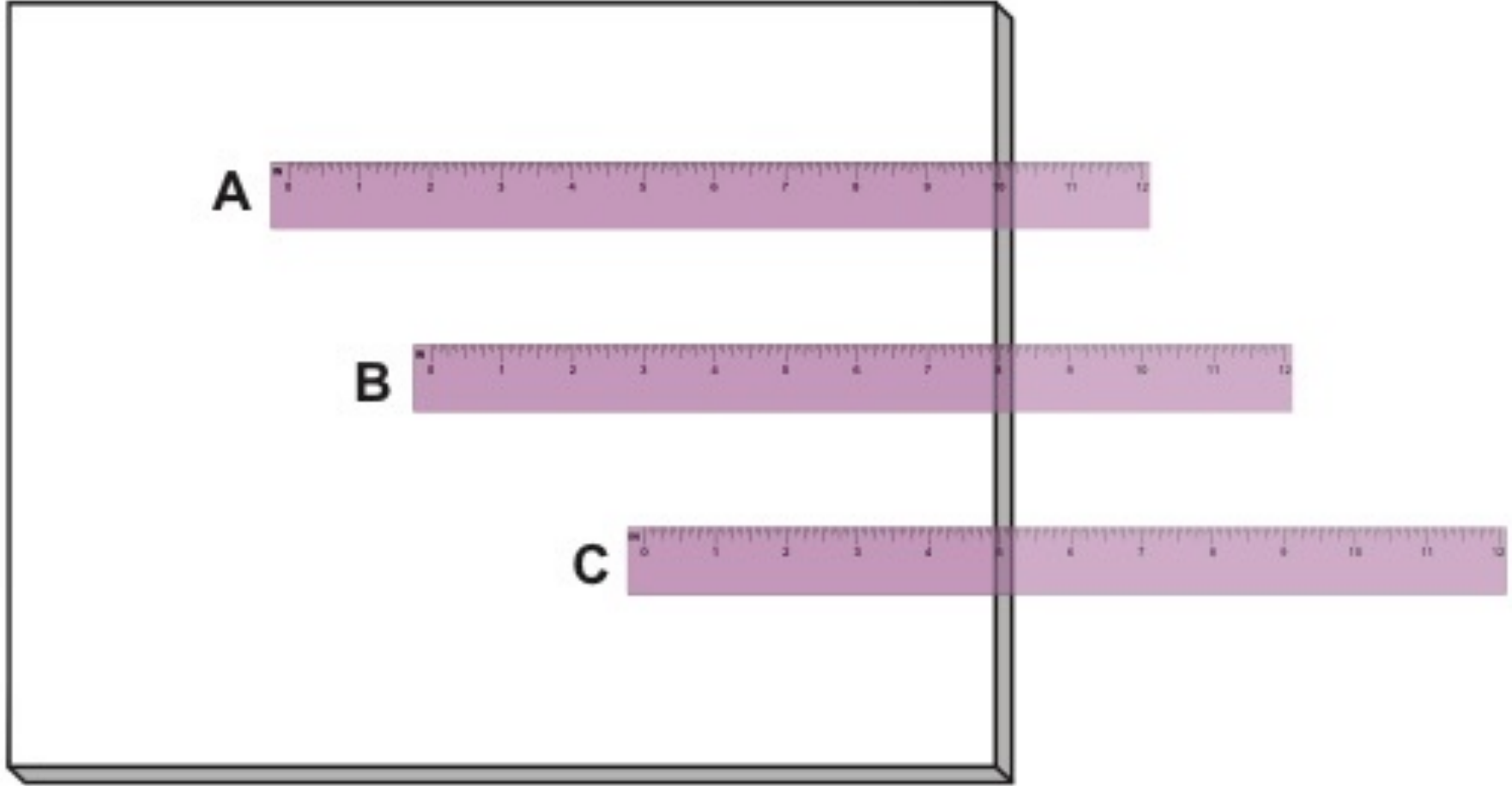
**A**

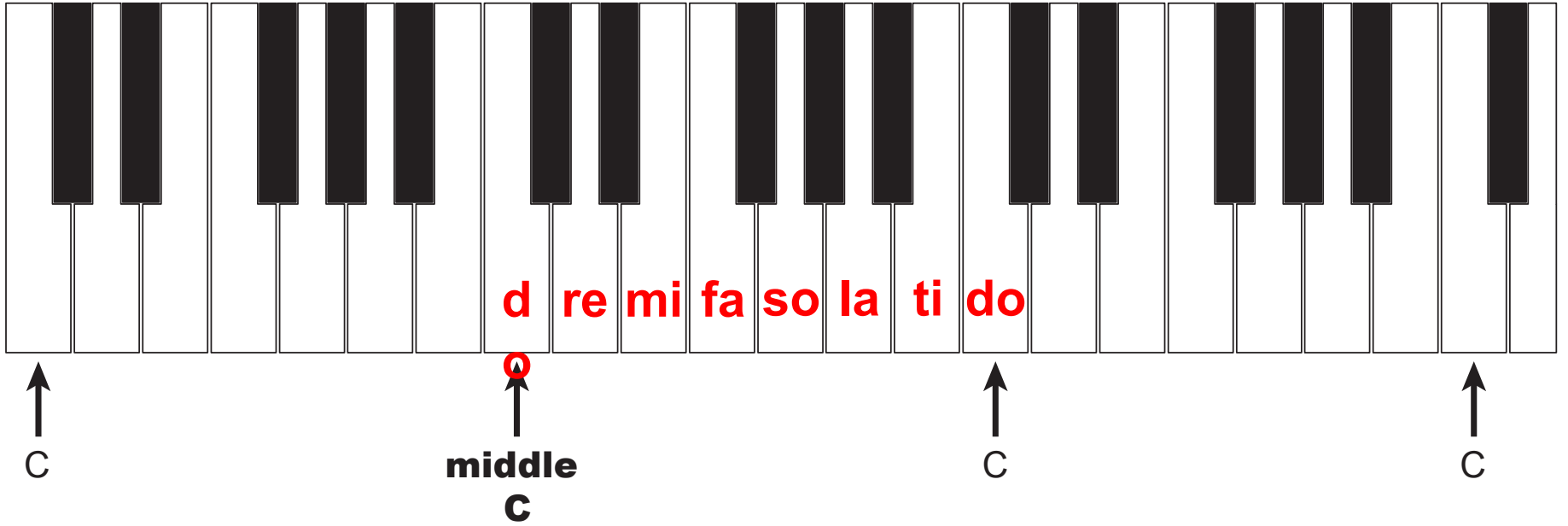


**B**

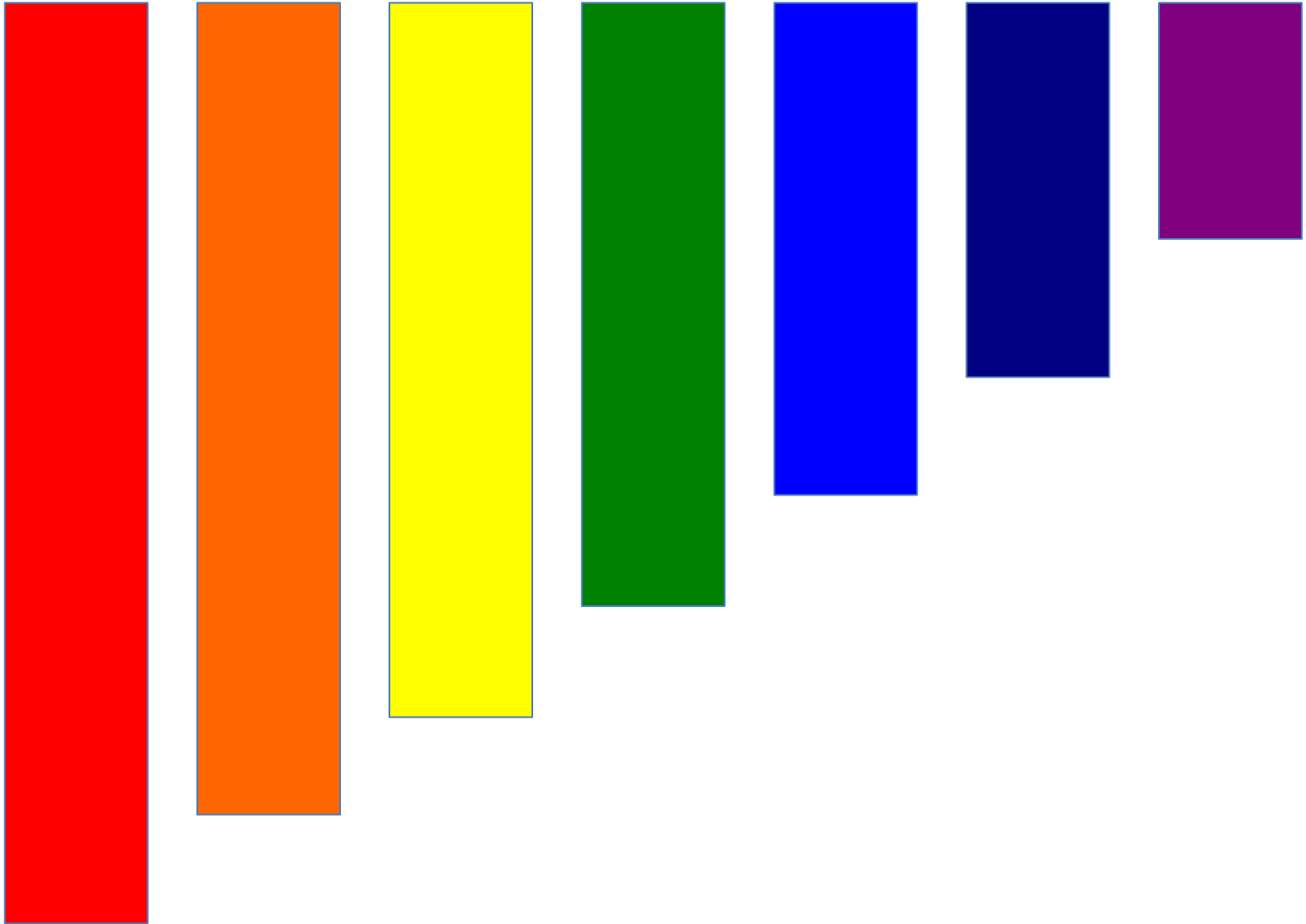


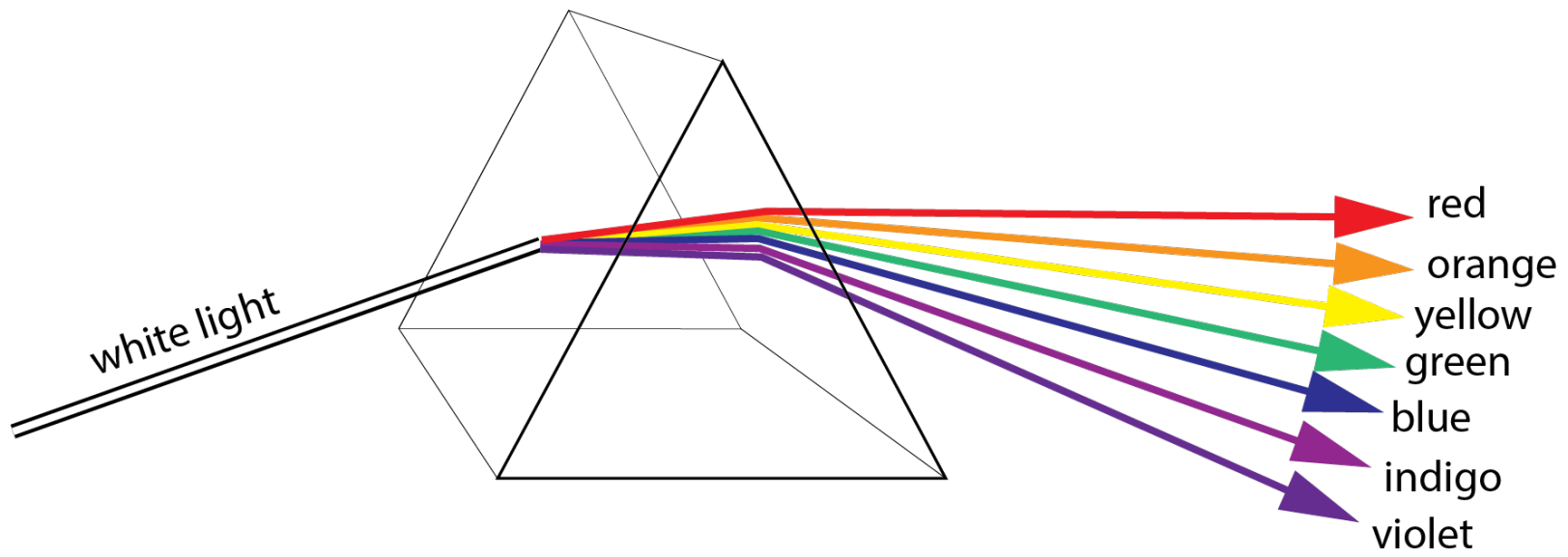
**C**





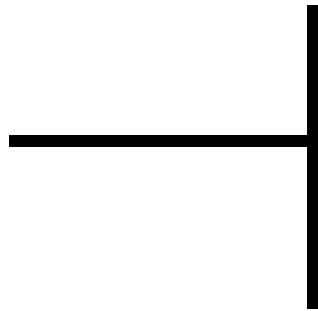
# Roy G Biv

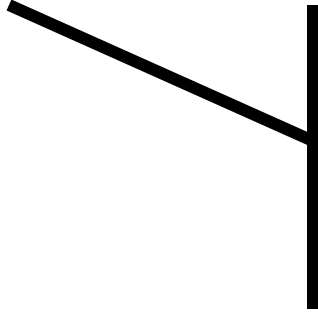


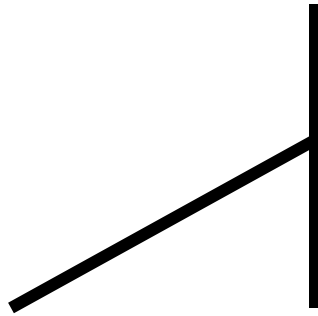


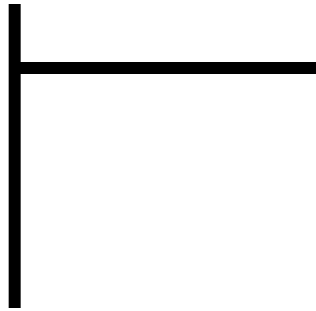
Roy G Biv

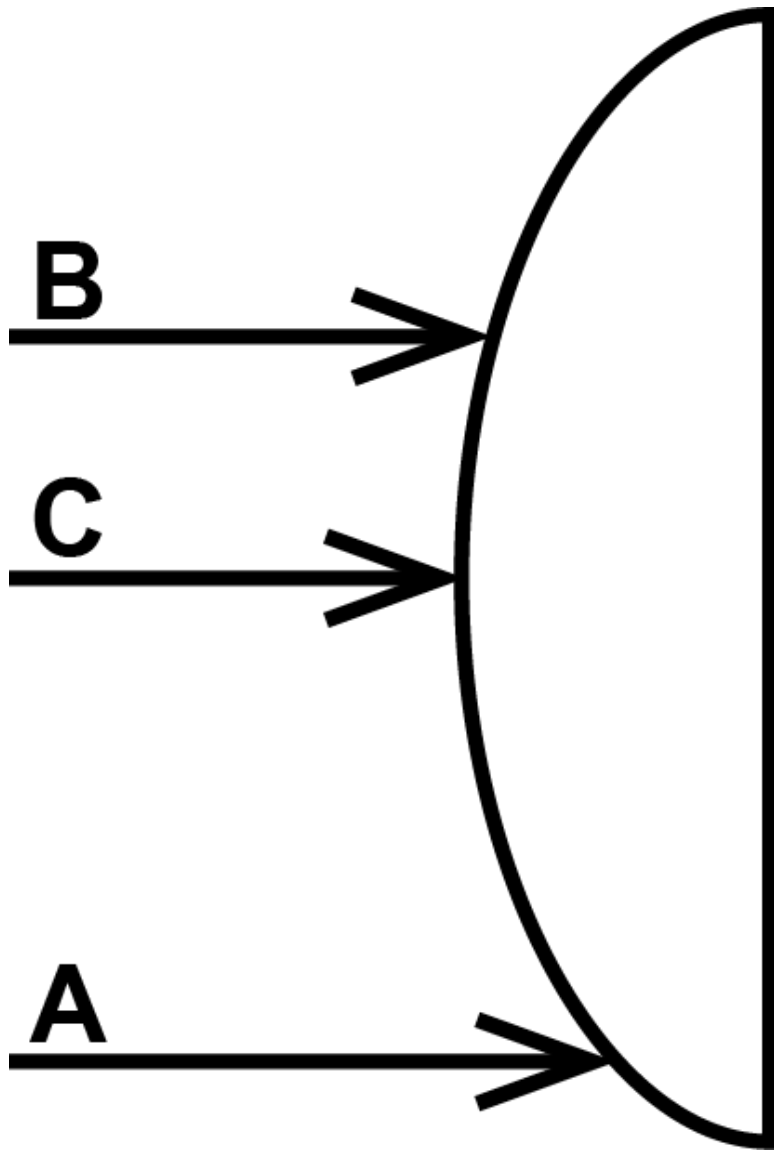
T

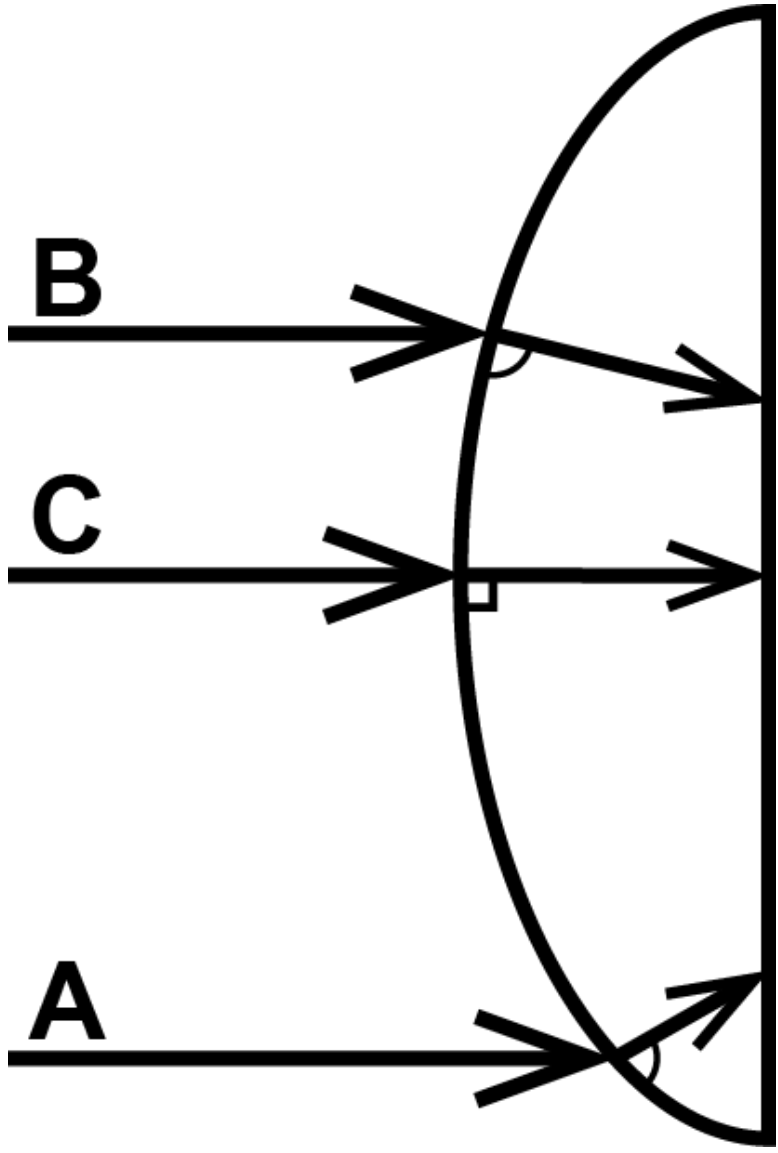


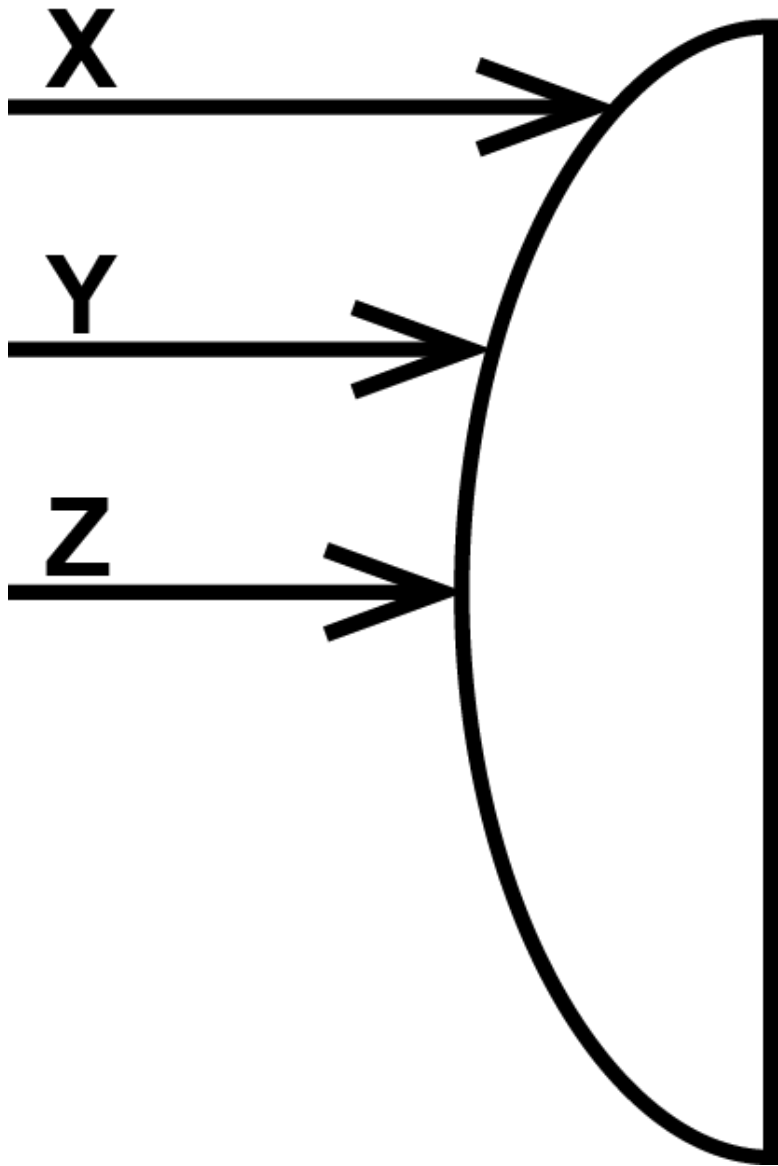


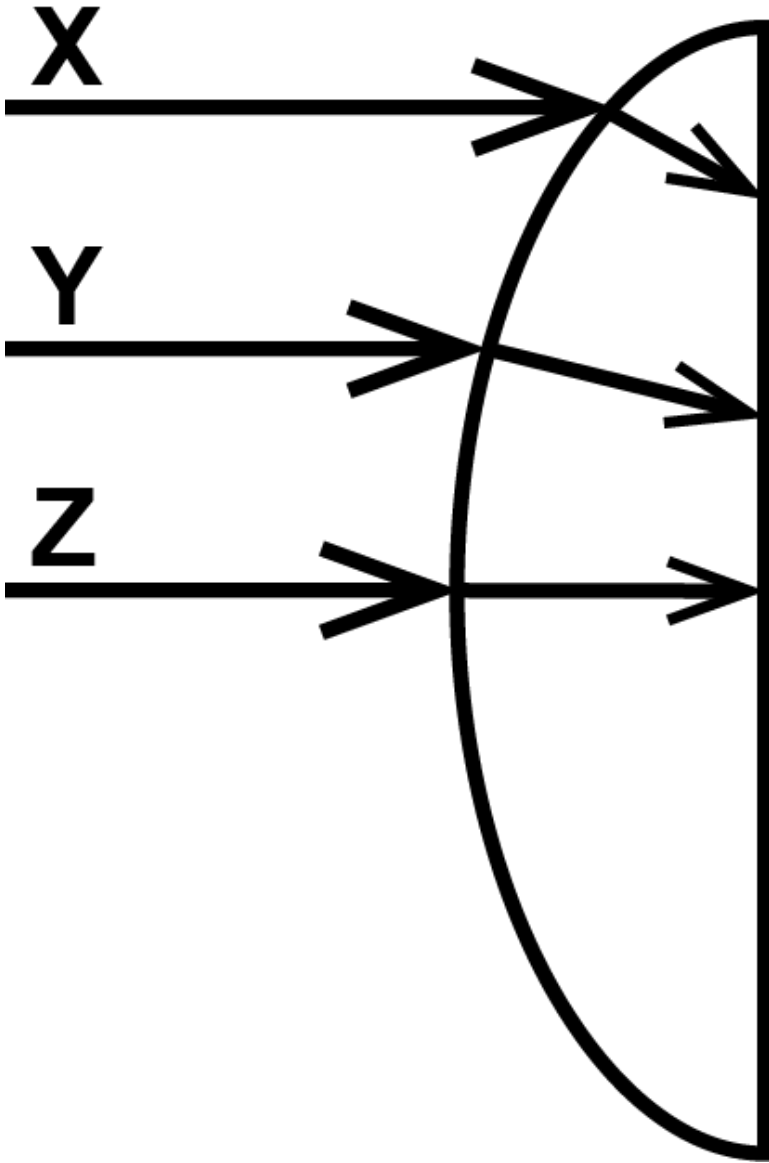




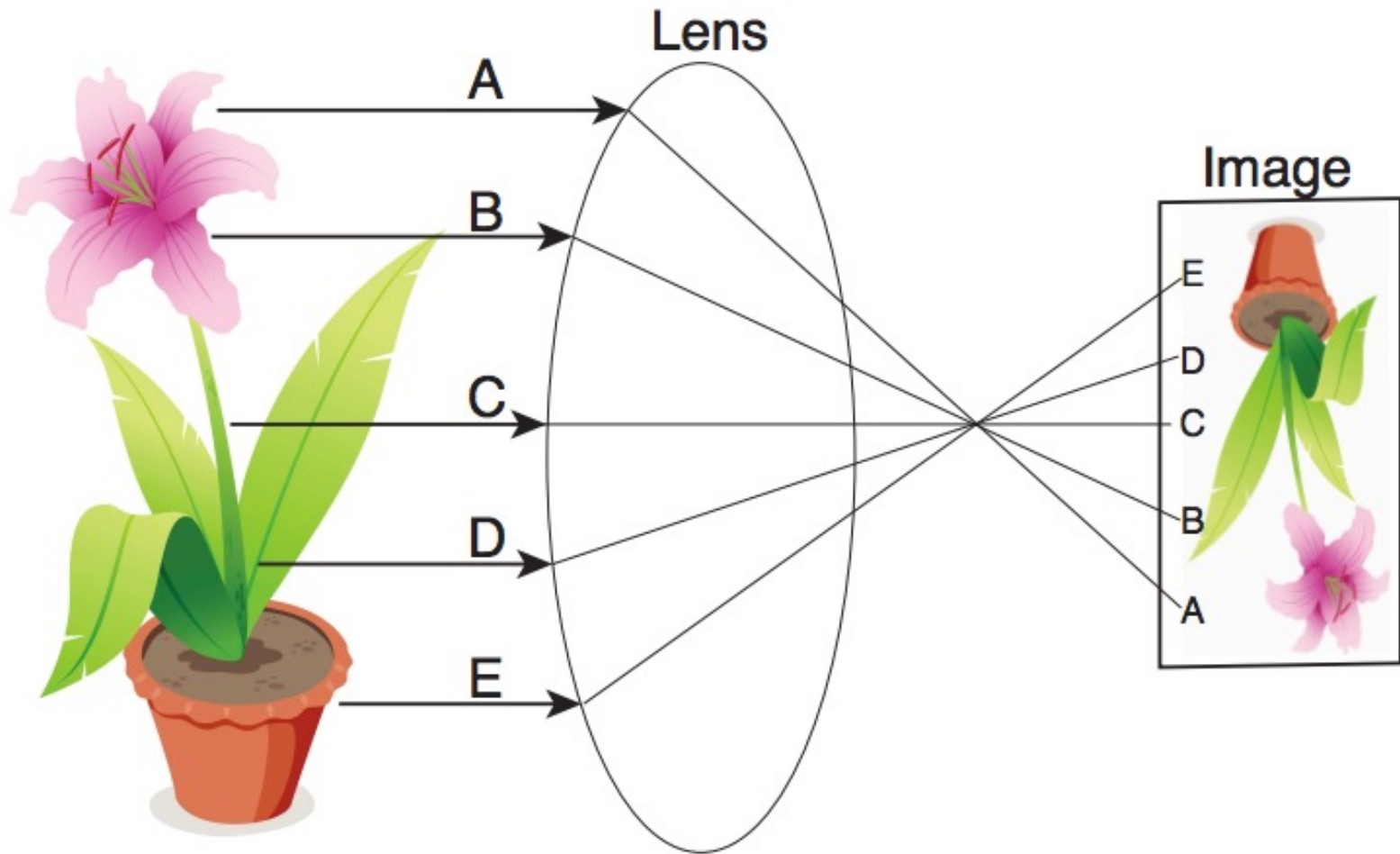






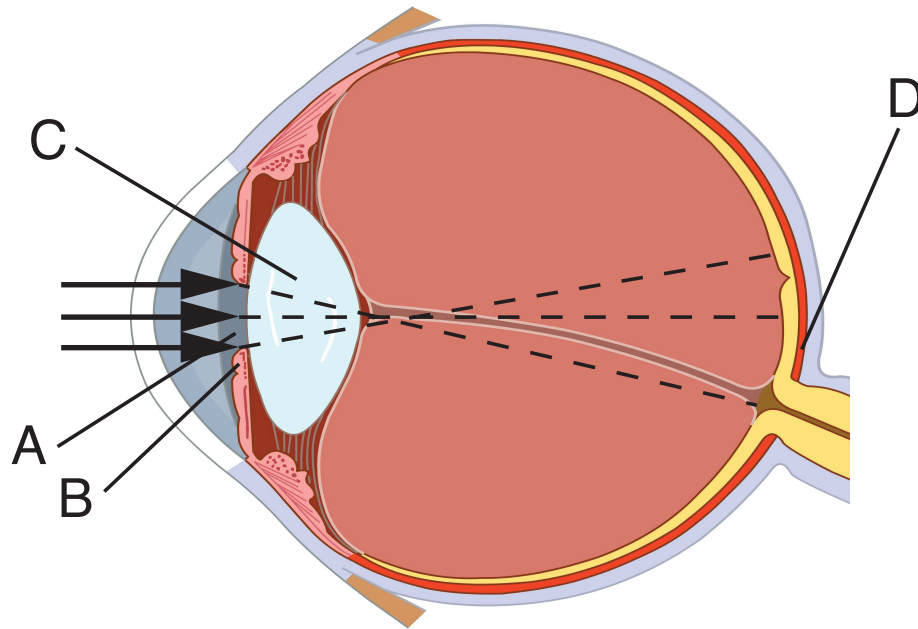
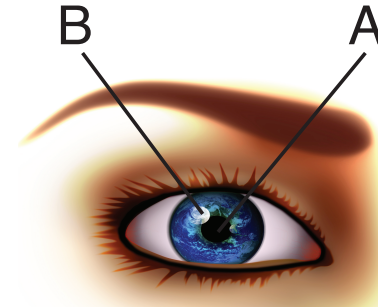


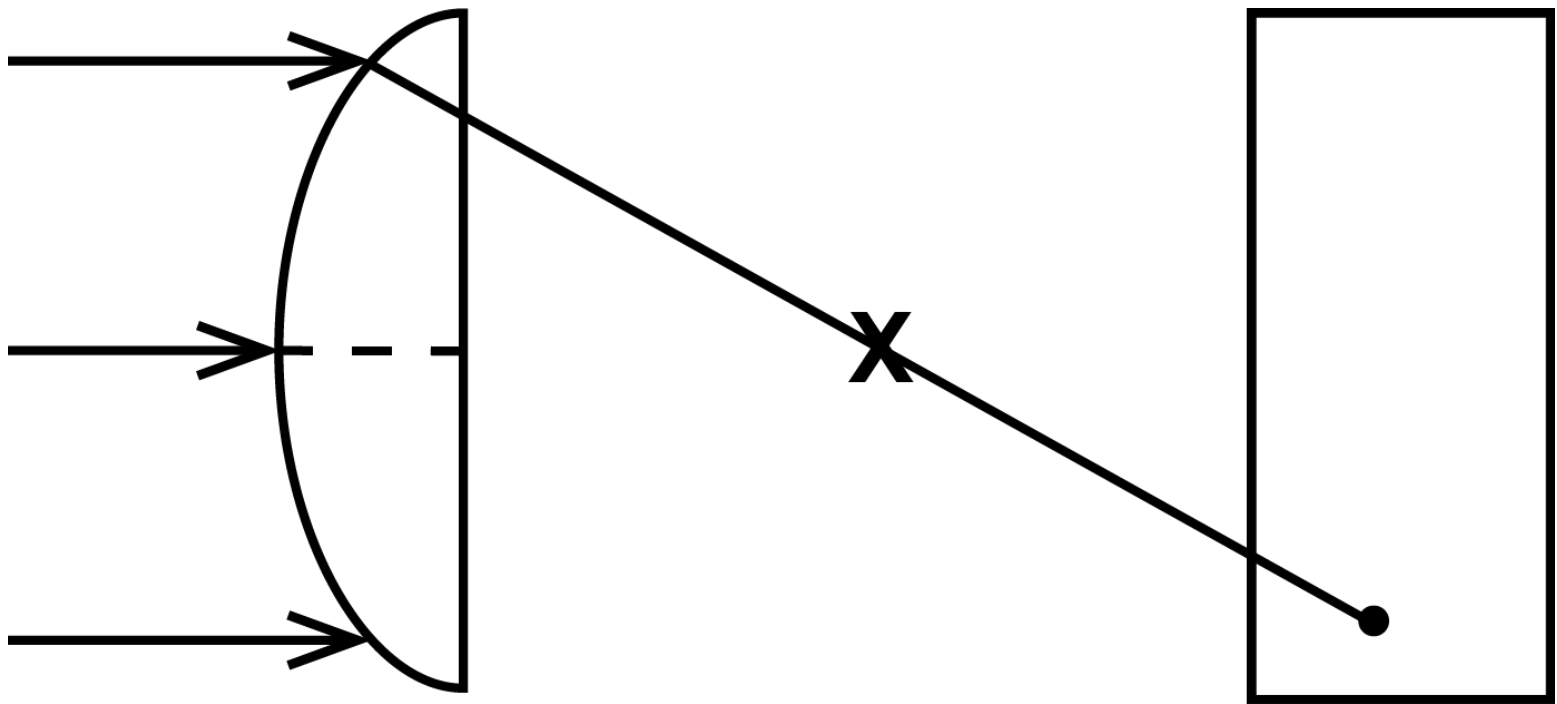
# Senses: Vision Chart A

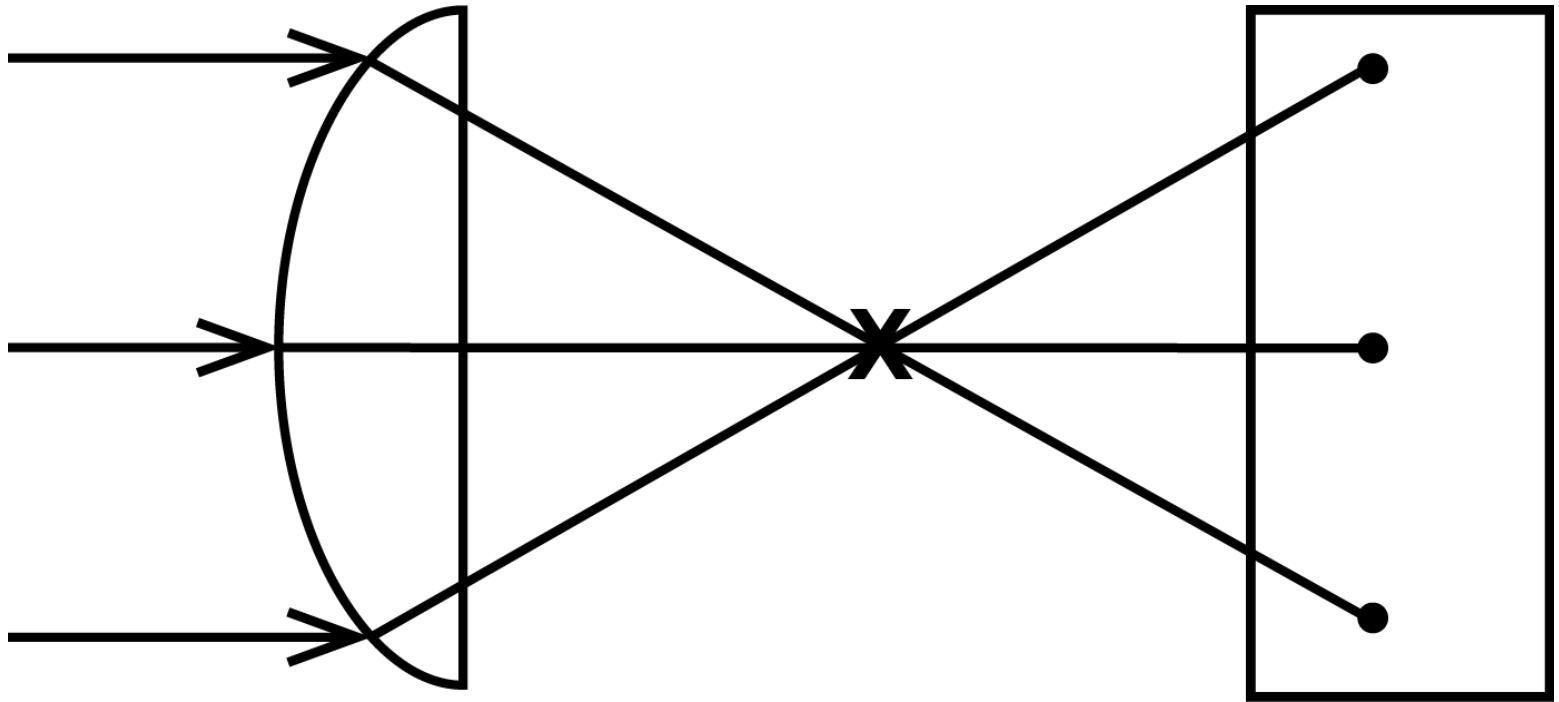


# Cross-Section of Eye Chart

- lens
- iris
- pupil
- retina

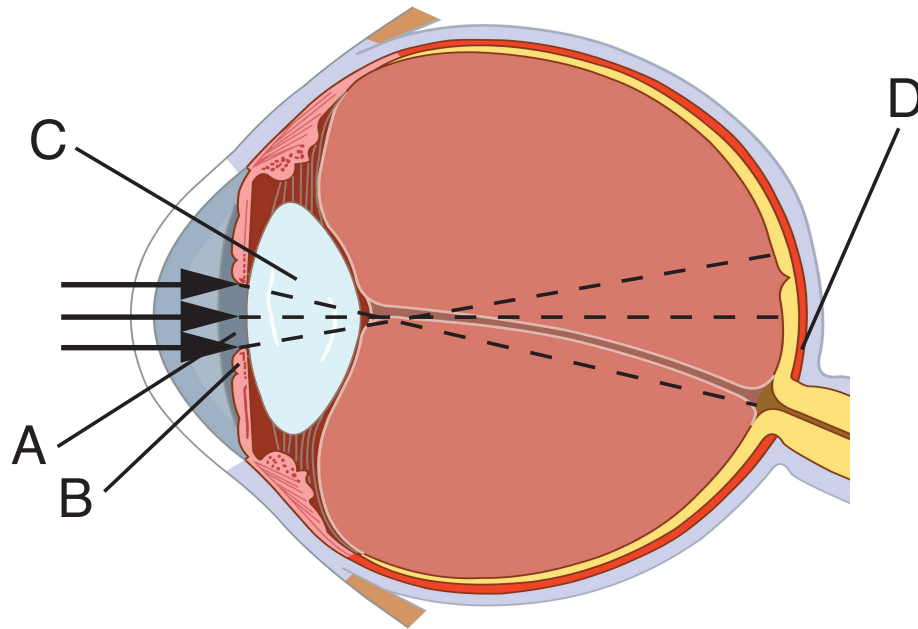
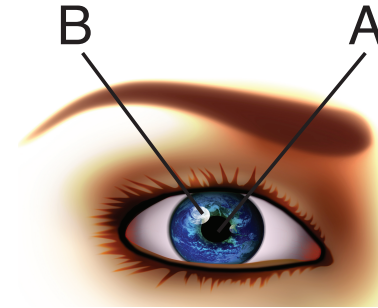


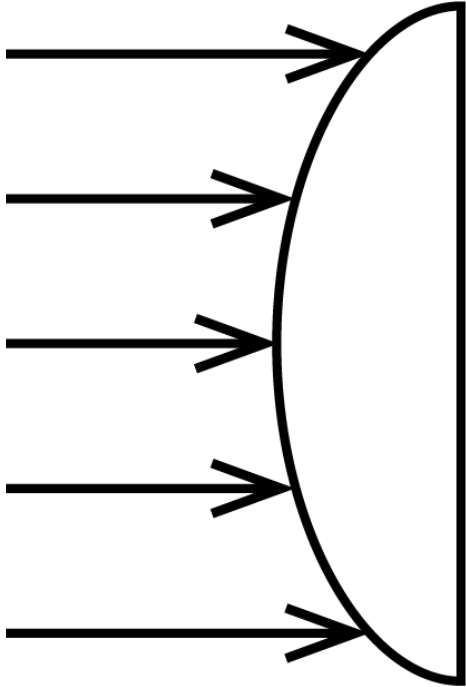




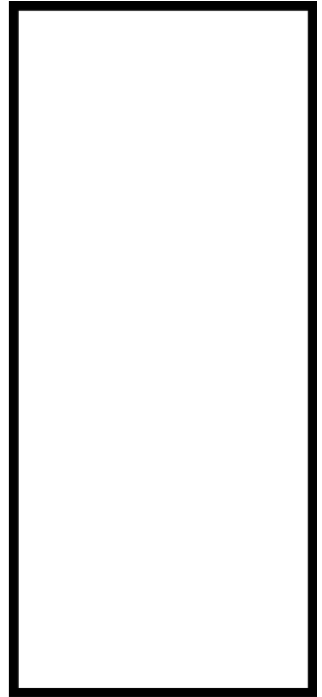
# Cross-Section of Eye Chart

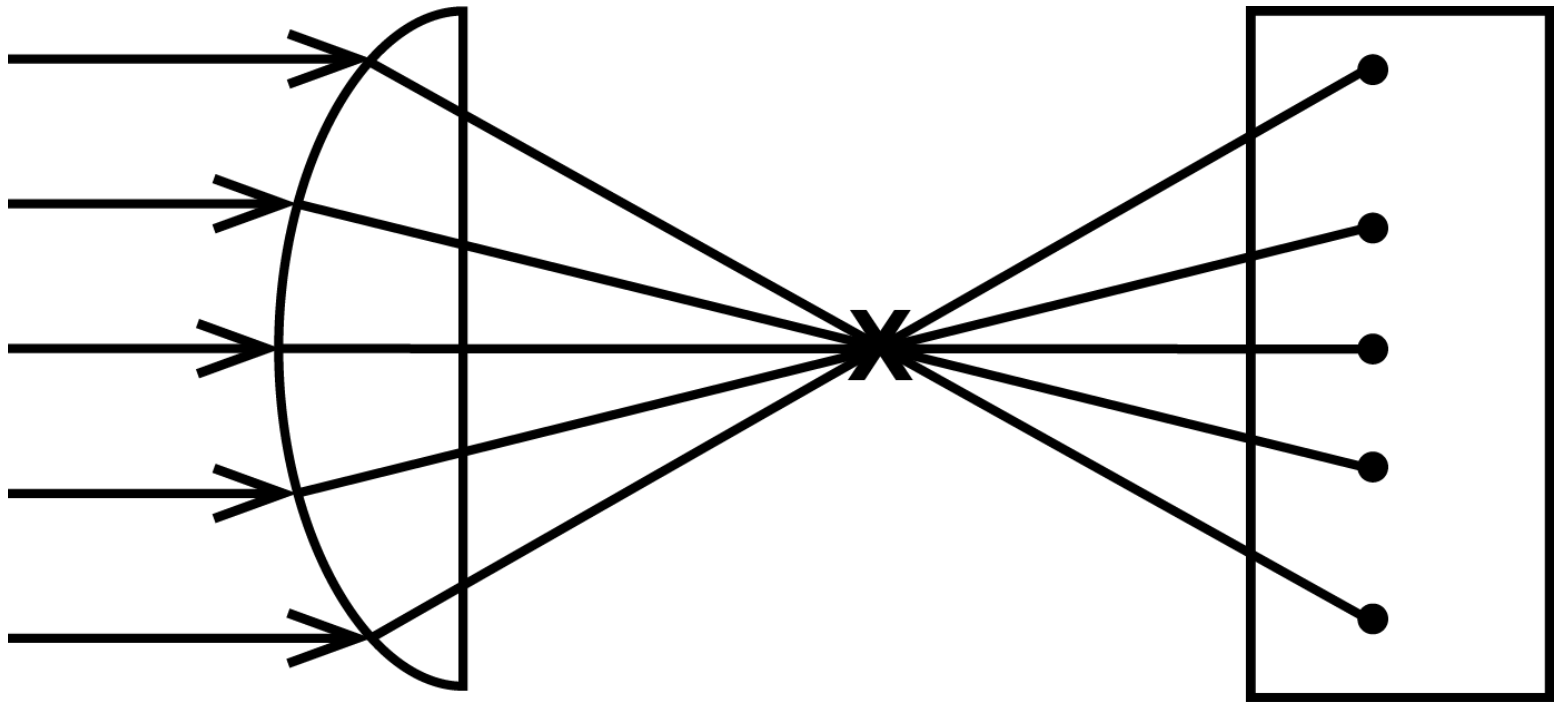
- lens
- iris
- pupil
- retina

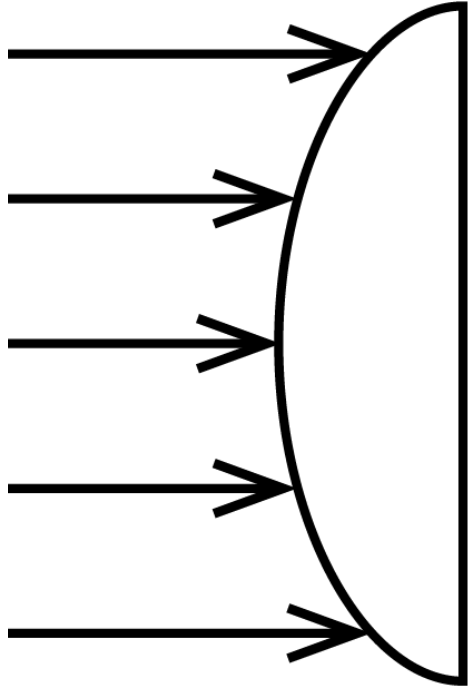




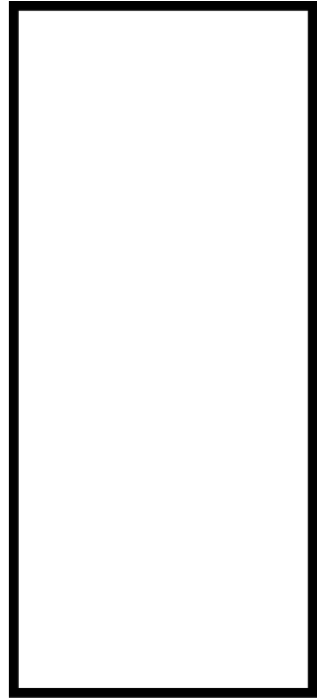
**X**

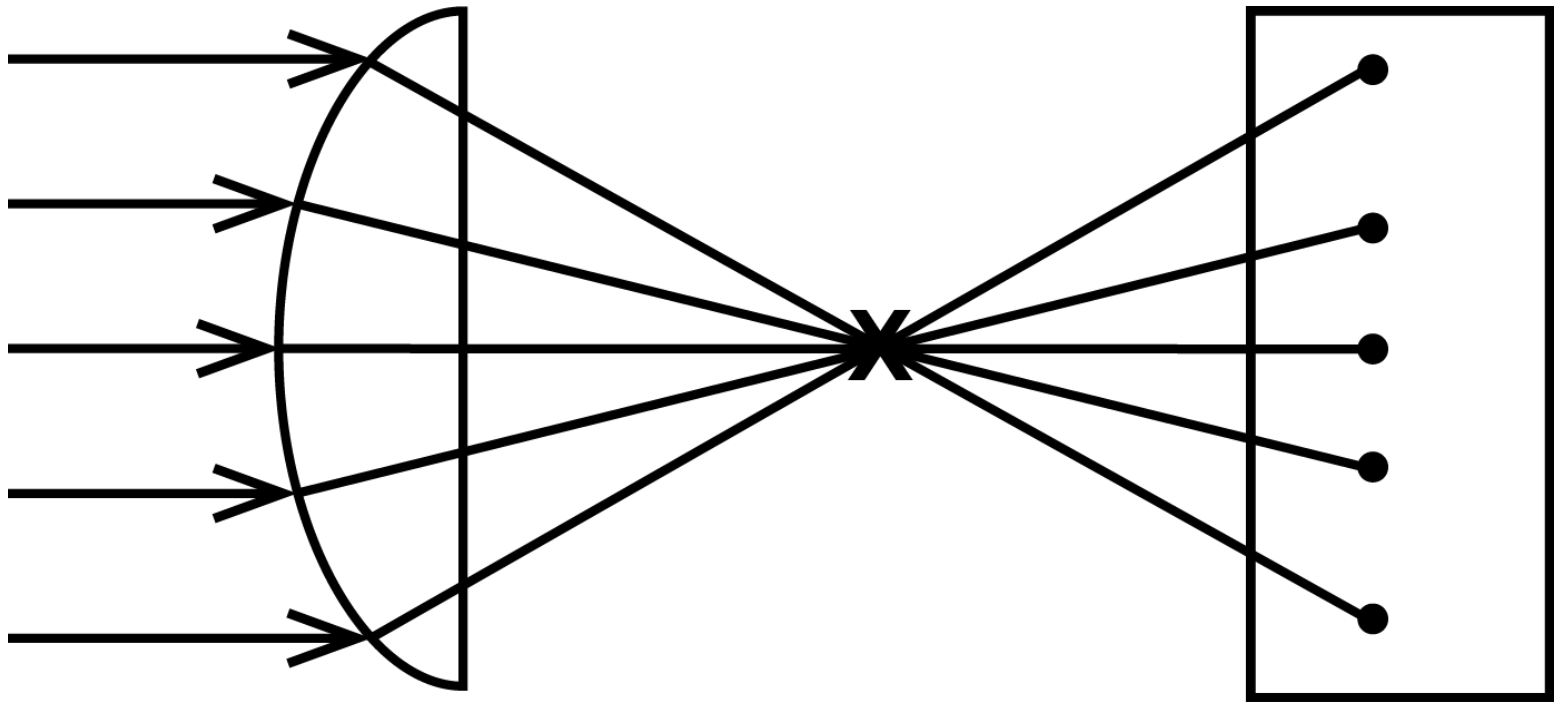


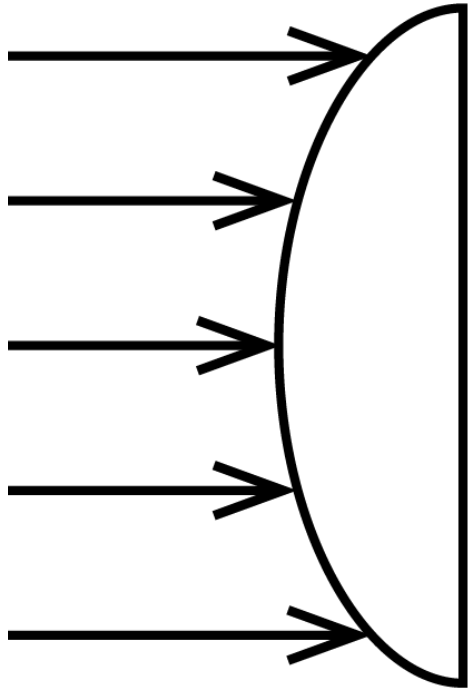




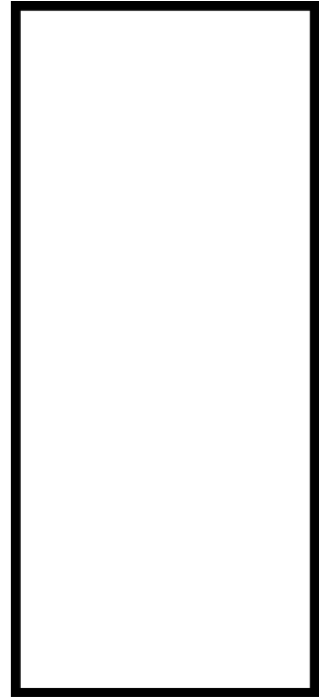
**X**

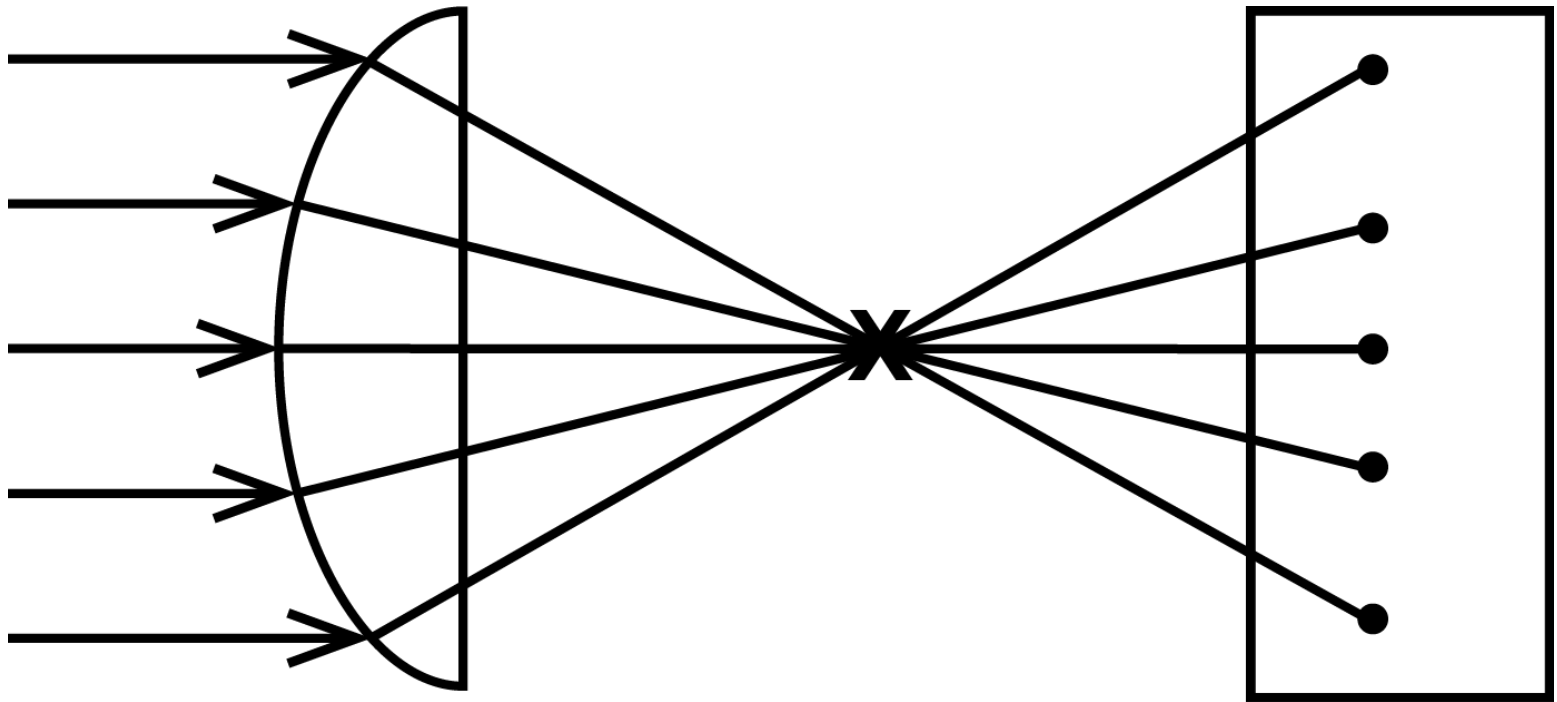


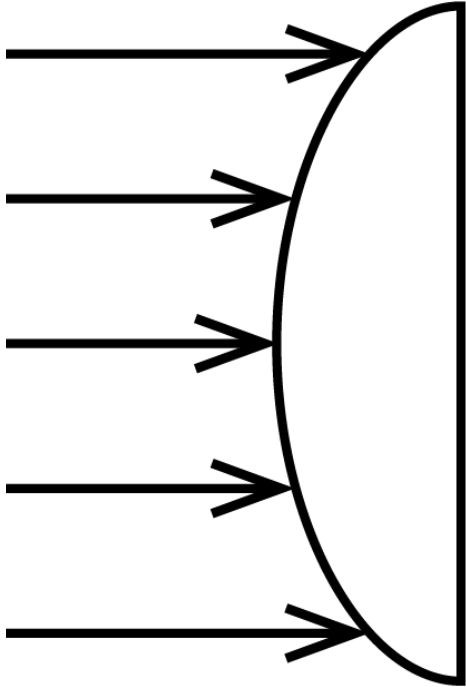




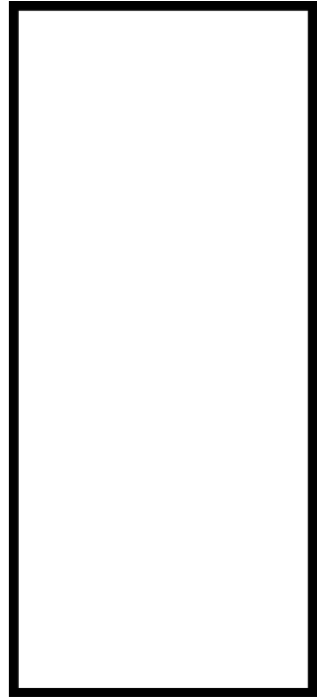
**X**

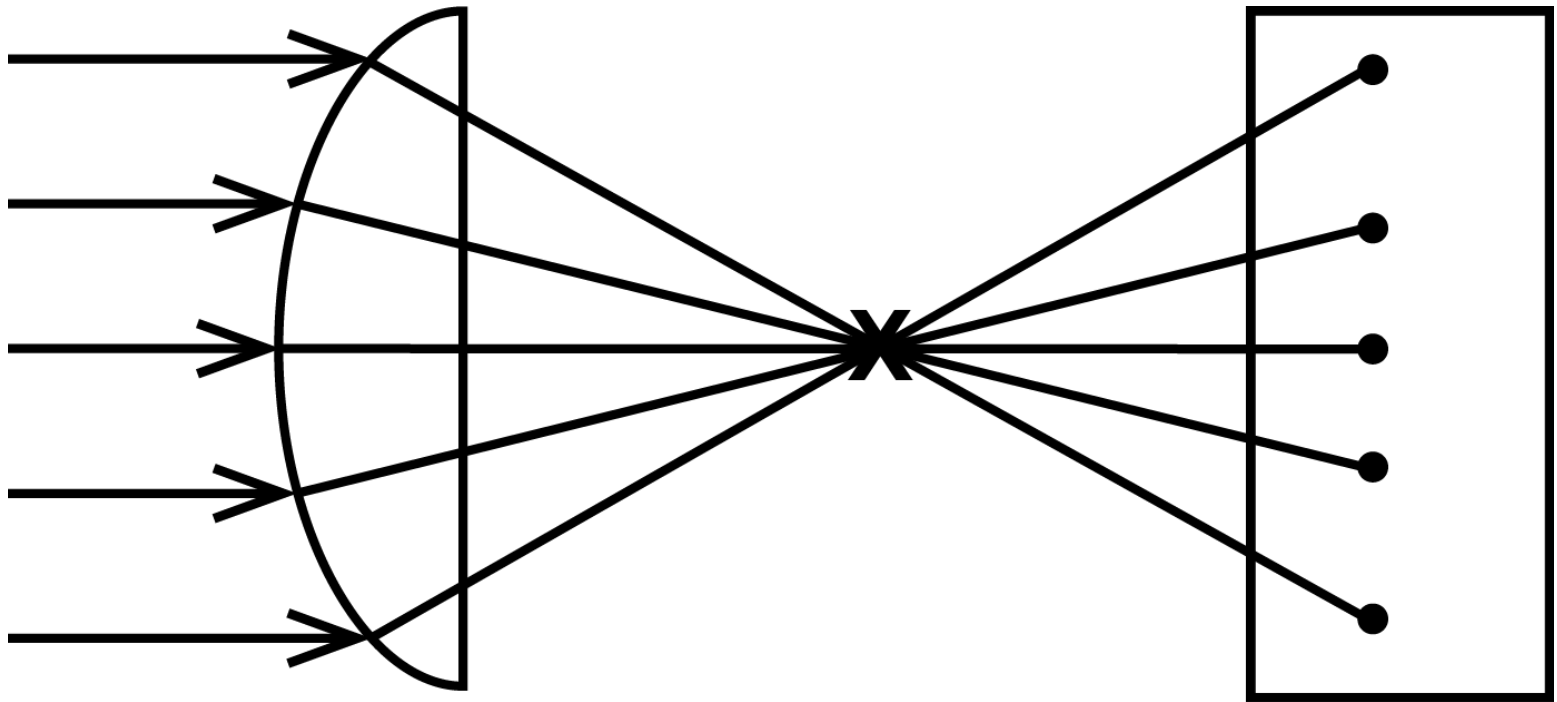






**X**





## Tastes on Tongue Chart



- sweet
- salty
- sour
- bitter
- savory

# World Map A



North America  
South America  
Antarctica  
Australia

# World Map A



# World Map A



# World Map A



Africa  
Eurasia

# World Map A



# World Map A



# World Map A



# World Map A



# World Map A



# World Map B



# World Map C



# World Map C



# World Map C



# World Map D



# World Map D



Arctic Ocean  
Atlantic Ocean  
Indian Ocean  
Pacific Ocean  
Southern Ocean

Africa  
Antarctica  
Australia  
Eurasia  
North America  
South America

# World Map B



# World Map D



# World Map D



# World Map D



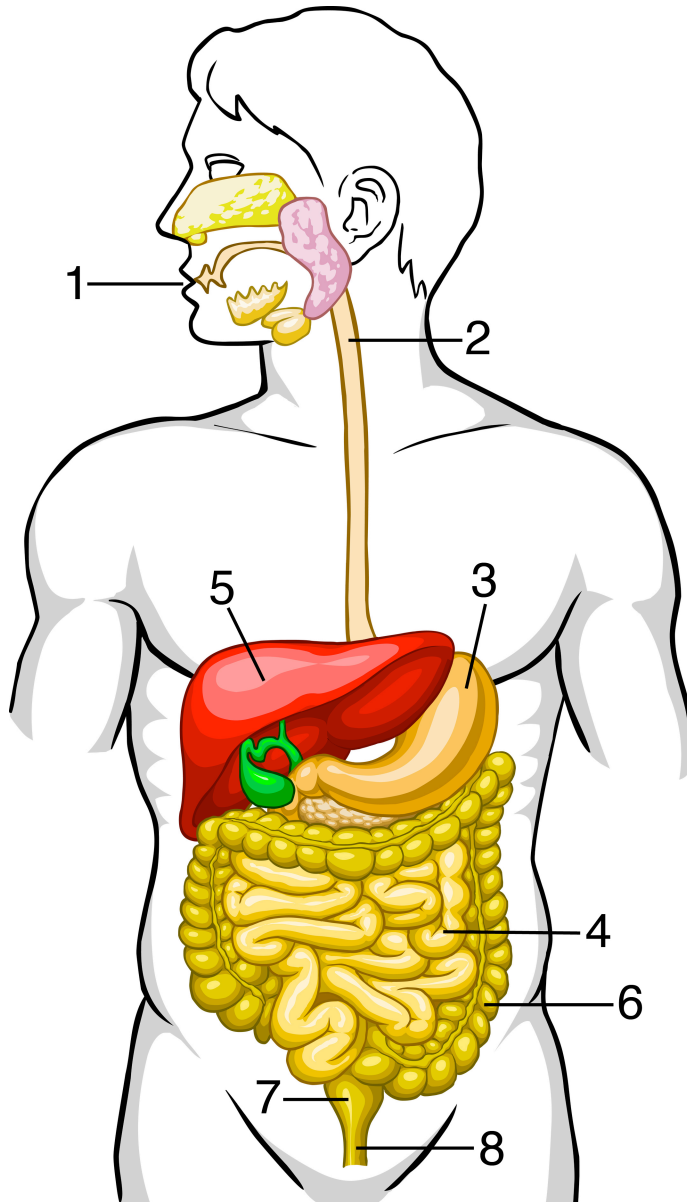
# World Map D



# Challenge Displays

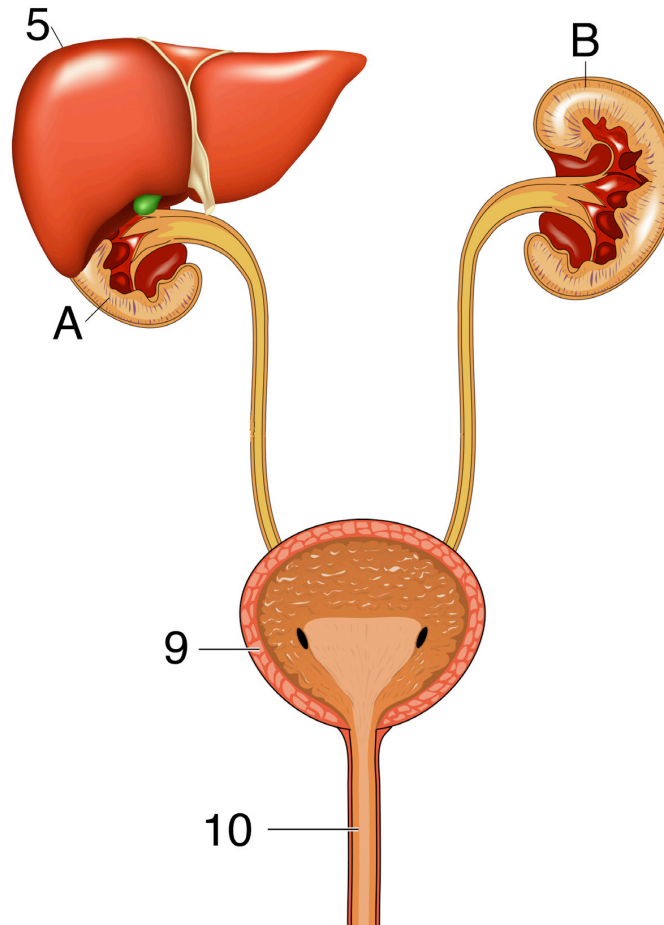


# Solid Waste Chart A



acid  
anus  
esophagus  
large intestine  
liver  
mouth  
rectum  
saliva  
small intestine  
stomach  
teeth

# Liquid Waste Chart A



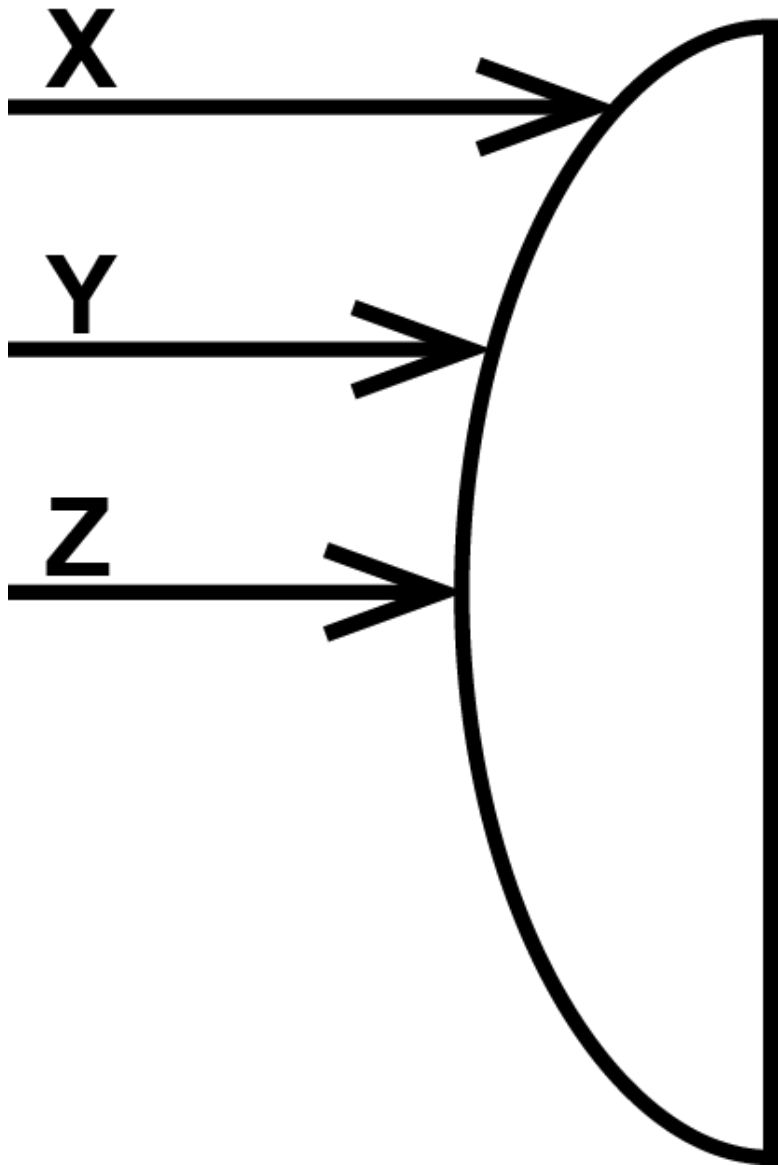
- bladder
- breathing out
- kidneys
- liver
- sweating
- urea
- urethra
- urine

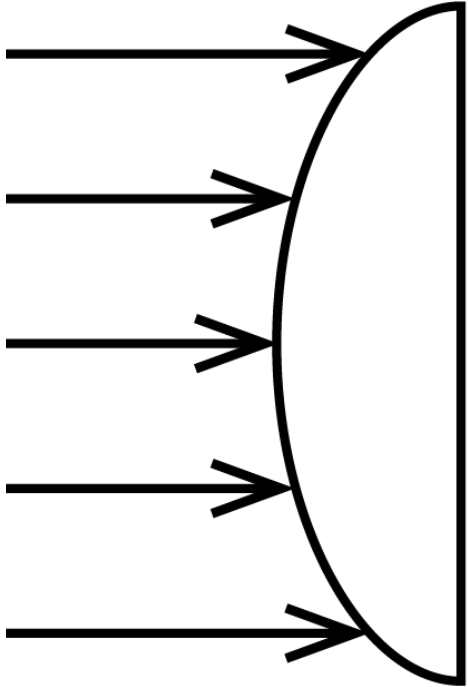
$$\begin{array}{r} 68 \\ - 32 \\ \hline 36 \end{array}$$

$$\frac{36}{1} \times \frac{5}{9} = 180 \div 9 = 20^{\circ} \text{ C}$$

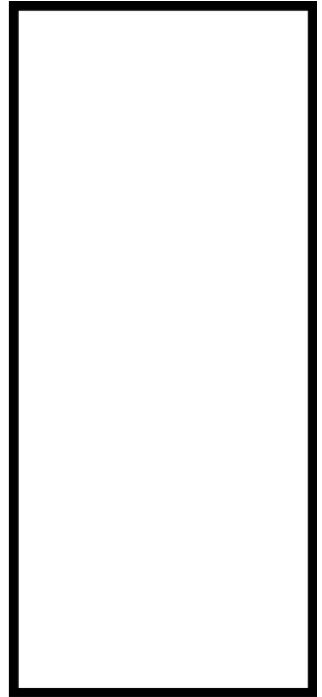
$$\frac{45}{1} \times \frac{9}{5} = 405 \div 5 = 81$$

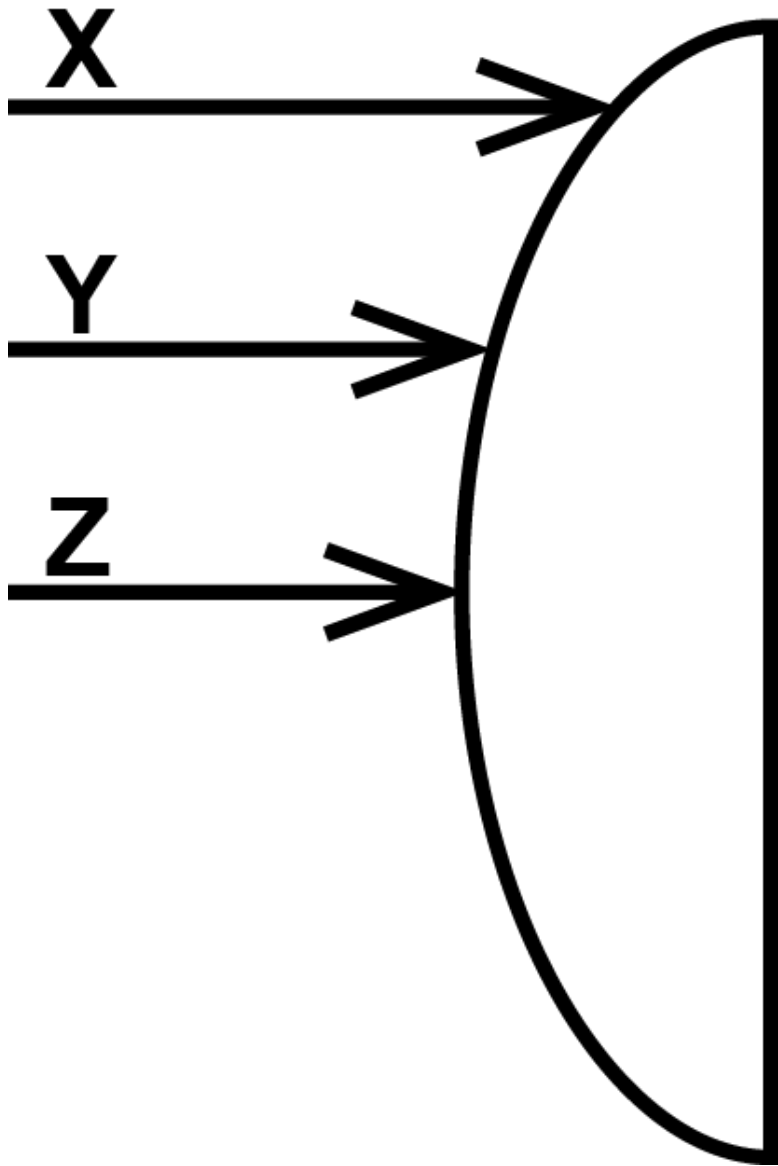
$$\begin{array}{r} 81 \\ + 32 \\ \hline 113^{\circ} \\ \text{F} \end{array}$$

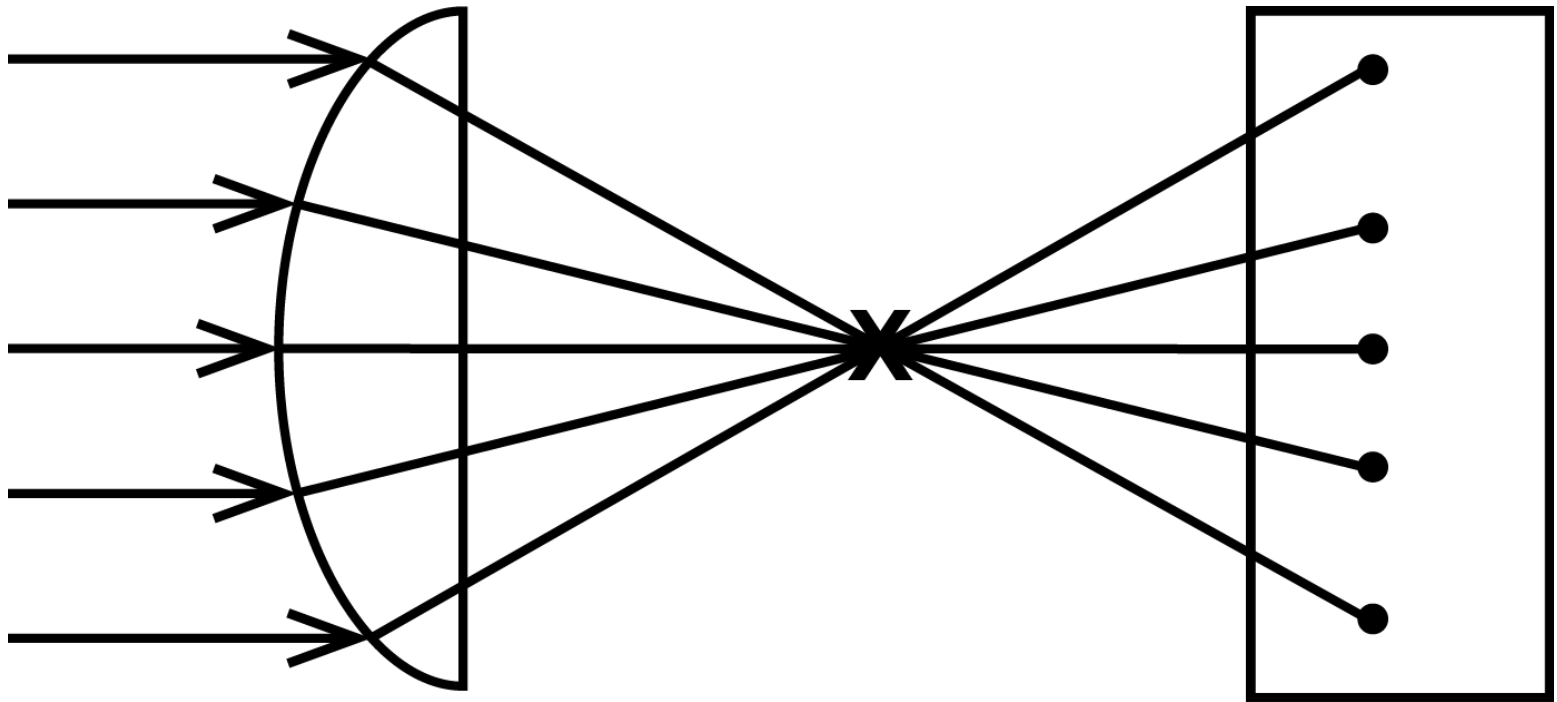




**X**







# World Map D





**National Institute for Direct Instruction (NIFDI)**

P.O. Box 11248  
Eugene, Oregon 97440  
Voice 1-877-485-1973  
Fax (541) 683-7543  
E-Mail: [info@nifdi.org](mailto:info@nifdi.org)