

**September 30, 2025**



In this edition of NIFDI NEWS!

- Register for NIFDI's In-Person Coaching Academy!
- Boost Your Skills--Attend a Remote Program Training
- Silver Star School Recognitions Posted
- Zach Groshell Releases "DI Voices"

If you have questions or need additional information, you can reach us at 877.485.1973 or [info@nifdi.org](mailto:info@nifdi.org).

Plan now to attend...

**Analyzing Data, Classroom Observations, and Providing Feedback**

Presented by **Direct Instruction Coaching Academy I**

for instructional coaches, peer coaches and others responsible for observing instruction and improving student performance

**November 13 & 14**  
Cambria Hotel Orlando Airport • Orlando, FL

For assistance registering or for questions, email [bwickman@nifdi.org](mailto:bwickman@nifdi.org) call 541.485.1973

## Register for NIFDI's In-Person Coaching Academy!

Join veteran trainer Beverly Trent on November 13 & 14 for NIFDI's popular academy-- *Analyzing Data, Classroom Observations & Providing Feedback*. This two-day training at the Cambria Hotel, Orlando Airport, is designed for instructional coaches, peer coaches, and others responsible for observing instruction and improving student performance.

Through demonstrations, practice, and hands-on activities, participants will learn how to:

- Gain meaningful information from lesson progress and in-program mastery data.
- Model how to improve written records.
- Conduct supportive classroom observations and demonstrations aimed at increasing student success.
- Provide effective oral and written feedback to instructors to directly impact student performance.
- Conduct classroom demonstrations, in-class coaching, and team teaching.
- Design and deliver effective, ongoing professional development sessions.

A description and registration information are available on our [website](#). You can also contact Bryan Wickman, NIFDI's Outreach Events Director, at 1.877.485.1973 or by email at [bwickman@nifdi.org](mailto:bwickman@nifdi.org) with questions or for more information.

## Introducing Direct Instruction Remote Trainings

**Corrective Reading Decoding Level A –**  
Friday, October 10

**Corrective Reading Decoding Levels B1 & B2 –**  
Friday, October 17

**Reading Mastery Signature Edition Grade K Reading – (Two-Part Training)**  
Friday, October 10 & Thursday, October 16

**Reading Mastery Signature Edition Grade 1 Reading –**  
Friday, October 24

**Direct Instruction Spoken English (DISE) –**  
Friday, October 31

**DISTAR Arithmetic –**  
Friday, November 7

**Connecting Math Concepts Level B –**  
Friday, November 14

**Routines and Expectations –**  
Friday, November 21

For assistance registering or for questions, email [bwickman@nifdi.org](mailto:bwickman@nifdi.org) call 541.485.1973

## Boost Your Skills-Attend a Remote Program Training!

Effective training is critical to the successful implementation of Direct Instruction (DI). Each year, we partner with thousands of instructors to build student success. We can partner with you, too! In our highly-focused remote training, you will learn, practice, and receive feedback on critical skills needed to successfully teach the programs.

Click on the links below for a complete description and to register for these interactive and effective trainings.

### [Corrective Reading Decoding Level A](#)

Friday, October 10, 7:30am - 2:30pm PT

### [Reading Mastery Signature Edition Grade K Reading](#)

Friday, October 10 and Thursday, October 16, 7:30am - 2:30pm PT

\*Due to the amount of material covered in this session, it is a two-day training.

### [Corrective Reading Decoding Levels B1 and B2](#)

Friday, October 17, 7:30am - 2:30pm PT

### [Reading Mastery Signature Edition Grade 1 Reading](#)

Friday, October 24, 7:30am - 2:30pm PT

### [Direct Instruction Spoken English](#)

Friday, October 31, 7:30am - 2:30pm PT

### [DISTAR Arithmetic 1](#)

Friday, November 7, 7:30am - 2:30pm PT

### [Connecting Math Concepts: Comprehensive Edition Level B](#)

Friday, November 14, 7:30am - 2:30pm PT

### [The Road to Success – Routines and Expectations](#)

Friday, November 21, 7:30am - 2:30pm PT

***Space in each session is limited! Sign up now and upgrade your skills!***



## Silver Star School Recognitions Posted

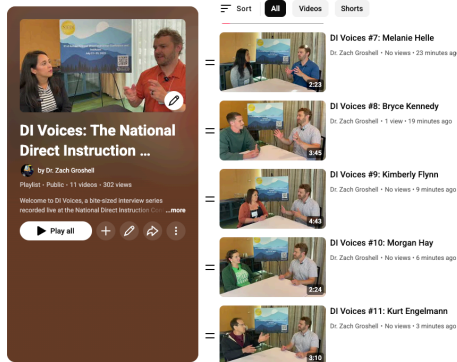
The first presentation of the Silver Star School awards took place at the 51st National Direct Instruction Conference and Institutes. The purpose of these

awards is to recognize schools or networks that have demonstrated a long-term commitment to utilizing Direct Instruction programs with fidelity.

The 2025 awards went to the following schools:

- Mystic Valley Regional Charter School, Malden, MA
- Classical Charter Schools/Roger Bacon Academy, NC
- Baltimore Curriculum Project, Baltimore, MD

Each of them has achieved amazing results. [Click here](#) to see these long-time implementations recognized.



## Zach Groshell Releases "DI Voices"

Along with presenting and attending sessions at the National Direct Instruction conference this past July, Zach Groshell interviewed several attendees and presenters. He describes *DI Voices* as "a bite-sized interview series recorded live at the National Direct Instruction Conference and Institutes...each mini-episode brings

you candid, on-the-ground conversations with educators and experts who are making Direct Instruction work in real classrooms and schools."

[Click here](#) to access the full playlist of interviews and hear what people have to say about Direct Instruction, NIFDI, and their conference experiences.

**The National Institute for Direct Instruction**  
 1140 Willagillespie Rd, STE 18  
 Eugene, OR 97401  
 877.485.1973

[Contact Us Today](#)

[Share This Email](#)

[Share This Email](#)

[Share This Email](#)

Know other DI users or supporters who would benefit from receiving NIFDI News? Share this sign up link: <http://www.nifdi.org/component/content/article/61-uncategorised/226-nifdi-news-signup>. Interested parties can also sign up via their mobile device by texting NIFDI to 22828 to get started!

Want to update your subscriber information? Simply click on the "Update Profile/Email Address" link found at the bottom of this email.

NIFDI | 1140 Willagillespie Rd STE 18 | Eugene, OR 97401 US

[Unsubscribe](#) | [Update Profile](#) | [Constant Contact Data Notice](#)